

ENROLLMENT PROJECTIONS FOR 2009-2018

FOR THE

NEW YORK CITY PUBLIC SCHOOLS

**Prepared for the
New York City School Construction Authority**

October 2009

TABLE OF CONTENTS

	Page
Introduction	3
Historical and Projected Enrollment in the New York City Public Schools	3
Factors Influencing Future Enrollment	4
Charter Schools	4
No Child Left Behind Act	9
Birth Data	11
Immigration	13
New Housing	19
Historical and Projected Enrollment in the Five Boroughs	22
Historical and Projected Enrollment by Race in New York City	26
Historical and Projected Enrollment by Race in the Five Boroughs	28
Projections by Community School District	36
High School Projections	39
District 75	42
Appendix	46
Projected PK-12 Enrollments for 2009-10 to 2018-19 for New York City...	47
Projected PK-12 Enrollments for 2009-10 to 2018-19 by Borough	49
Projected PK-8 Enrollments for 2009-10 to 2018-19 by Community School District	55
Projected Grade 9-12 Enrollments for 2009-10 to 2018-19 by Borough	89
Methodology	95
Introduction.....	95
Historical Enrollment.....	95
Birth Data.....	95
Enrollment Projection Methods	97
Enrollment Projections	98
District 75.....	98

Introduction

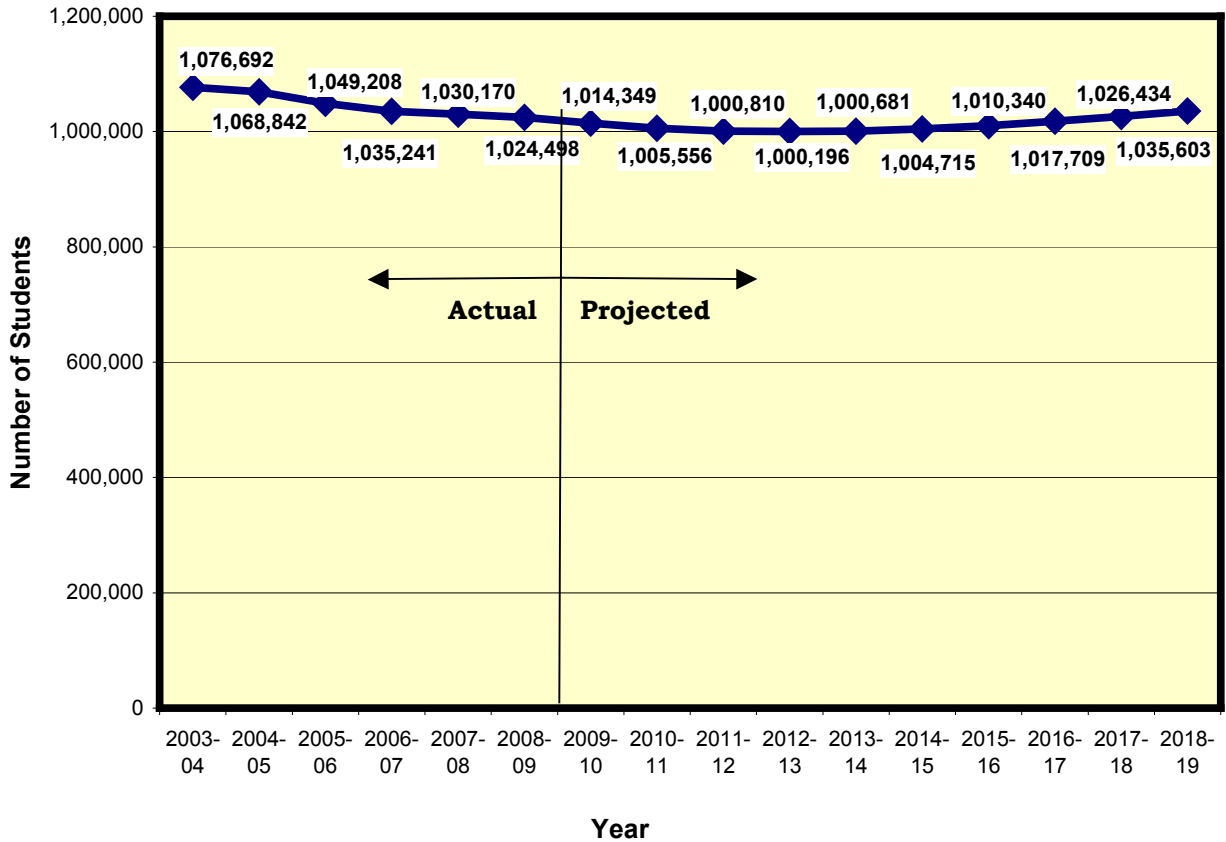
For the fourth consecutive year, Statistical Forecasting LLC was retained by the New York City School Construction Authority to perform enrollment projections for the New York City Public Schools for the ten-year period beginning with the 2009-10 school year and ending in 2018-19. Enrollment projections were performed at the community school district level for grades PK-8 and the borough level for the high school grades (9-12). All projections were computed by the four major ethnicities in the New York City Public Schools: Asian/American Indian, Non-Hispanic Black (subsequently referred to as Black), Hispanic, and Non-Hispanic White (subsequently referred to as White). Although American Indians are a very small percentage of the student population, they were grouped with Asians to be consistent with methodology used in previous years. Projections at the borough level were computed by aggregating the projections from each of the 32 community school districts, the high school projections, and enrollment from District 75, the special education district, and then were aggregated again to derive the overall projections for the New York City Public Schools.

Historical and Projected Enrollment in the New York City Public Schools

While the total enrollment in the New York City Public Schools declined again in 2008-09, the loss of students was smaller than expected. Total enrollment was 1,024,498 students as of October 2008. Enrollment declined by approximately 5,700 students in the past year, which is similar to the decline experienced in the previous year. Since the 2003-04 year, there has been a loss of 52,194 students. Enrollment is projected to decline through 2012-13, before reversing trend and rising in the remaining six years of the projection period as shown in Figure 1. In the first five years of the projection period, enrollment is projected to decline by nearly 24,000 students. However, in the last five years of the projection period, enrollment is projected to increase by approximately 35,000 students. Over the ten-year projection period, a gain of approximately 11,000 students is projected.

The projections performed in this study utilized the Cohort-Survival Ratio Method and the Grade Progression Differences Method. Detailed discussions of each method are provided in the Appendix. Both methods capture the most recent enrollment trends and carry them forward into the future. The biggest assumption in using either method is that the most recent historical trends will continue into the future. If there is a departure from these trends caused by, for example, numerous new housing starts, changes in school district policy, changes to immigration laws, an economic downturn, etc., the enrollment projections presented are less likely to be accurate in future years. Therefore, the projections need to be revised annually to detect potential reversals in enrollment trends. Changes in enrollment are dependent on several factors such as birth rates, movement of students into or out of the school district, the presence of alternative schools such as charter schools, private schools, or parochial schools, and school district policy changes.

Figure 1
New York City PK-12 Enrollment History and Projections
2003-2018



Note: The historical enrollment values shown are lower than those cited in the official register which contains students educated in both on-site and off-site facilities. This figure does not reflect students educated in off-site facilities.

Factors Influencing Future Enrollment

Charter Schools

The number of charter schools located in New York City and charter school enrollment continues to grow. The number of charter schools in the city has grown from 21 in 2003 to 79 in 2008. As shown in Figure 2, charter school enrollment in the city has increased from 4,384 in 2003-04 to 23,827 in 2008-09. There were 17 new charter schools in 2008, four of which were located within District 7 in the Bronx. In Table 1 following, the number and type of charter school (elementary, middle, elementary/middle, etc.) within each community school district are shown along with the charter school enrollment as of October 2008. Manhattan has the most charter schools with 26 while the Bronx and Brooklyn each have 24 charter schools. While

Manhattan has the most charter schools of the five boroughs, it has the second largest enrollment with 7,333 students. Districts 4 and 5 have nine and eight charter schools respectively within their boundaries. District 5 has the largest enrollment with 2,658 students.

The Bronx has 24 charter schools and has the third largest charter school enrollment of the five boroughs with 6,303 students. Districts 9 and 7 have nine and eight charter schools respectively within their boundaries. Nearly half of all Bronx charter school students are located within District 9, which also has the greatest charter school enrollment of any district in the New York City Public Schools.

Brooklyn has 24 charter schools and the largest charter school enrollment of the five boroughs with 8,068 students in the 2008-09 school year. There are six charter schools located in District 14, which has the most of any school district in the borough. Districts 13, 16, 17, and 19 each have three charter schools located within their boundaries.

Figure 2
New York City Charter School Enrollment 2003-2008

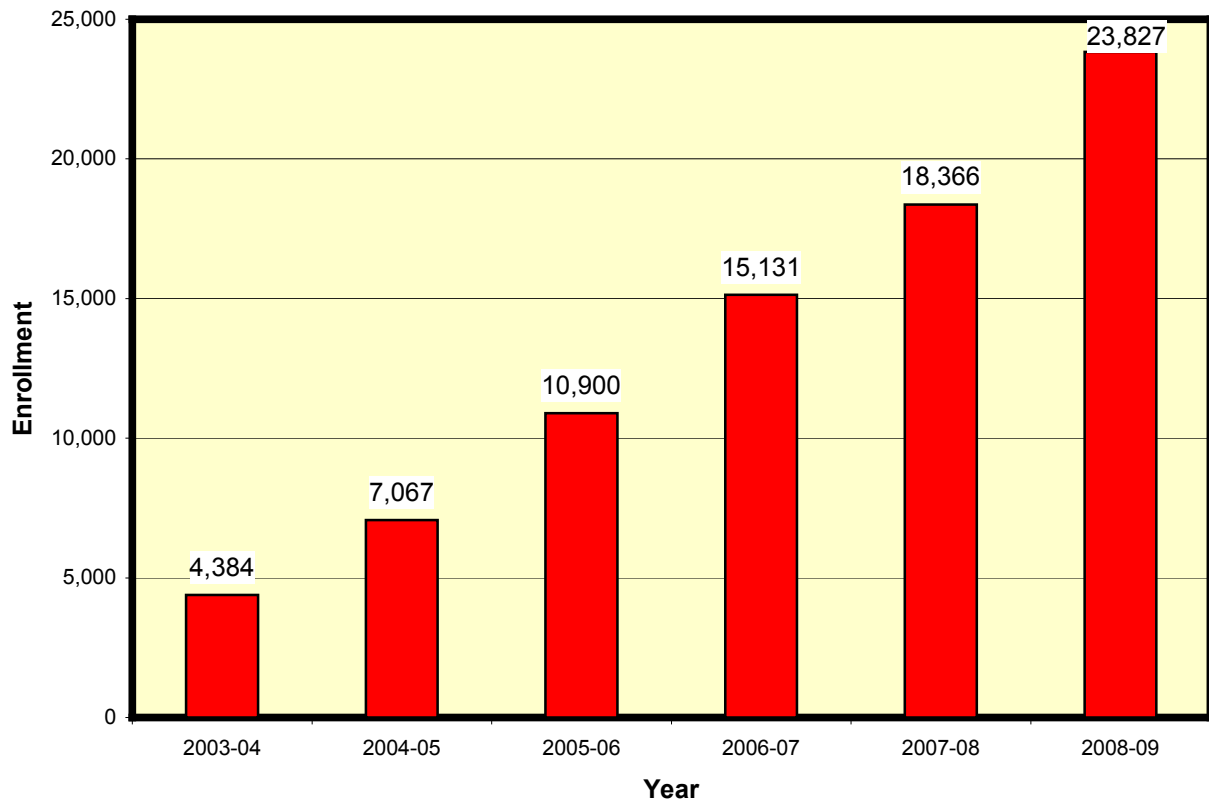


Table 1
Charter School Distribution and Enrollment by Community School District
in the 2008-09 School Year

Community School District (CSD)	Number of Charter Schools in CSD	Charter School Type	Year(s) Opened	Charter School Enrollment ¹
1	2	ES, ES/MS	2005	436
2	3	ES/MS/HS, MS/HS	2000, 2005, 2006	827
3	3	ES, ES/MS	1999, 2005	862
4	9	ES, MS, ES/MS, MS/HS	2000-2001, 2003, 2005-2006, 2008	2,274
5	8	ES, ES/MS/HS, MS, MS/HS	2003, 2004, 2005, 2006, 2008	2,658
6	1	MS	2005	276
Manhattan Totals	26			7,333
7	8	ES, ES/MS, MS, HS	2000, 2003, 2004, 2005, 2008	1,430
8	4	ES, ES/MS/HS	2003, 2004, 2006, 2007	1,276
9	9	ES, ES/MS, MS/HS, HS	2000, 2001, 2004, 2006, 2008	2,915
10	1	ES	2008	101
11	1	ES	2003	345
12	1	ES	2006	236
Bronx Totals	24			6,303
13	3	ES	2000, 2004, 2006	781
14	6	ES, MS, ES/MS, MS/HS, MS, HS	2000, 2001, 2004-2006	2,094
15	2	ES, ES/MS	2005, 2008	400
16	3	ES, ES/MS, MS	2003, 2008	928
17	3	ES/MS, MS, ES/MS/HS	2002, 2005	1,462
18	2	ES, MS	2007, 2008	348
19	3	ES, ES/MS/HS	2005, 2006	1,327
20	0	N/A	N/A	0
21	0	N/A	N/A	0
22	0	N/A	N/A	0
23	1	ES	2008	184
32	1	ES/MS/HS	2006	544
Brooklyn Totals	24			8,068
24	0	N/A	N/A	0
25	0	N/A	N/A	0
26	0	N/A	N/A	0
27	1	ES	2004	303
28	0	N/A	N/A	0
29	1	ES	2000	498
30	3	ES, ES/MS, ES/MS/HS	2000, 2002, 2008	1,322
Queens Totals	5			2,123
31	0	N/A	N/A	0
Staten Island Totals	0			0
New York City Total	79			23,827

Note: ¹Data as of October 2008

Queens has five charter schools, three of which are located within District 30. Queens has the fourth largest charter school enrollment of the five boroughs. Staten Island does not have any charter schools.

What effect are the charter schools having on enrollment in the New York City Public Schools? Is there a relationship between the increasing enrollment in the charter schools and the declining enrollment in the New York City Public Schools? To answer this question, correlation coefficients (r), shown in Table 2, were computed to measure the strength of linear association between New York City Public School enrollment and New York City charter school enrollment. To perform this analysis, data from the last six years were used. The following results should be reviewed with caution given the small number of years used in this analysis.

Correlation coefficients measure the relationship or association between two variables; this does not imply that there is cause and effect between the two variables. Other variables, known as lurking variables, may have an effect on the true relationship between charter enrollment and public school enrollment. Negative correlation coefficients indicate that as one variable is increasing, the other variable is decreasing. Positive correlation coefficients indicate that as one of the variables increases (decreases), the other variable increases (decreases) as well. The computed linear correlation coefficient is always between -1 and $+1$ inclusive. Values near -1 or $+1$ indicate a strong linear relationship between the variables while values near 0 indicate a weak linear relationship between the variables. Correlations could only be computed in those districts that had multiple years of charter school enrollment. Therefore, correlation coefficients were not computed in Districts 18, 20-26, 28, and 31. Many of these districts do not have any charter school students located within their boundaries.

It was anticipated that most of the correlation coefficients would be negative; that is, as charter school enrollment increased, public school enrollment would decrease. Of the 22 correlation coefficients computed, 15 were negative and seven were positive. In addition, tests of significance were performed to determine which correlation coefficients were statistically significant. Correlation coefficients that are statistically significant have p values ≤ 0.05 , which indicates that there is a relationship between the two variables, whether it be positive or negative. Of the seven positive correlation coefficients, only one was statistically significant (District 27). This indicates that there is a strong association between rising charter school enrollment and rising public school enrollment in this district. Of the 15 negative correlation coefficients, ten were statistically significant. This indicates that there is a strong association between rising charter school enrollment and declining public school enrollment in these districts. The strongest negative associations were in Districts 6, 13, and 17. To reiterate, these results indicate that there is an association between the two variables, not cause an effect. Declining public school enrollment in some districts may be due to other reasons, such as families moving out of the neighborhood served by their local community school district, rather than rising charter school enrollment.

Table 2
Correlation between Enrollment in New York City Charter Schools
and New York City Public Schools from 2003-2008

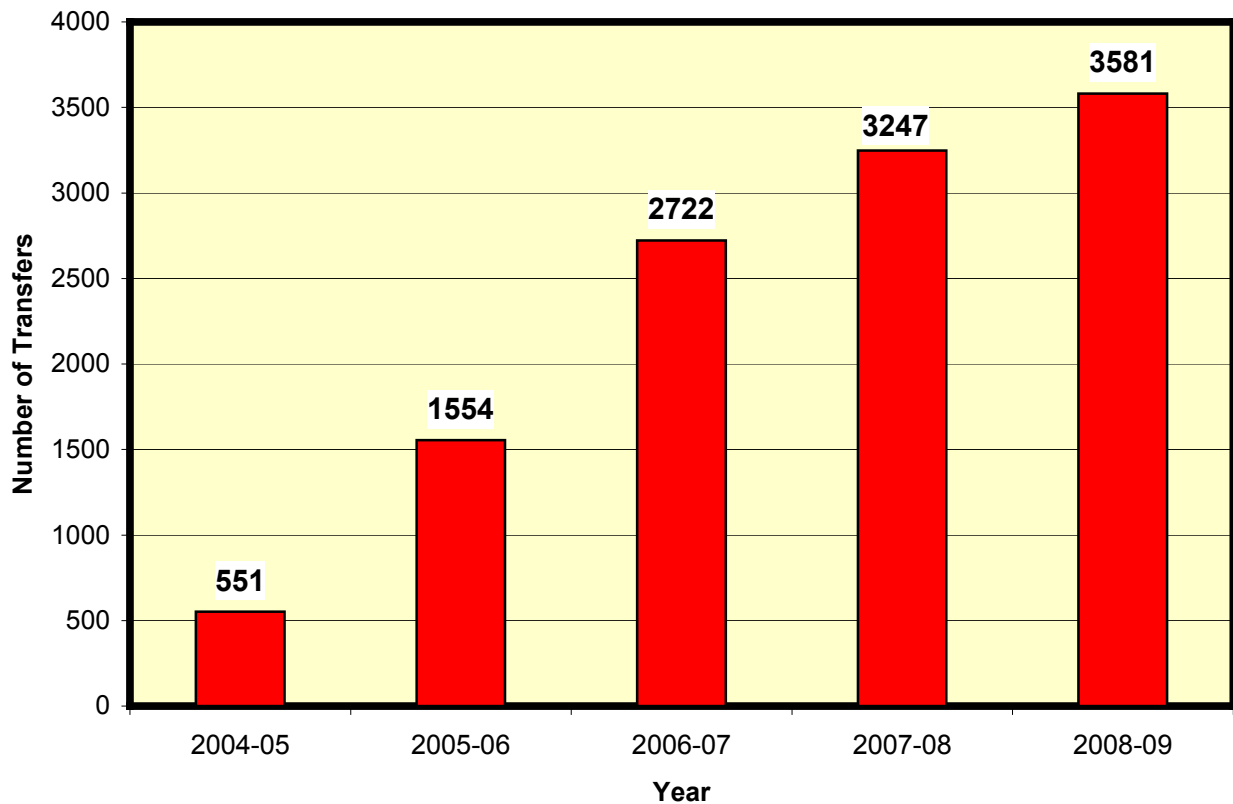
Community School District (CSD)	Correlation (r)	p-value
Manhattan		
1	0.892	0.108
2	0.766	0.076
3	-0.921	0.026*
4	-0.869	0.025*
5	-0.878	0.022*
6	-1.000	0.000**
Bronx		
7	-0.437	0.387
8	0.542	0.346
9	-0.917	0.010**
10	-0.112	0.888
11	-0.261	0.739
12	0.632	0.565
Brooklyn		
13	-0.942	0.005**
14	-0.494	0.320
15	0.992	0.081
16	-0.879	0.021*
17	-0.976	0.001**
18	N/A	N/A
19	-0.971	0.029*
20	N/A	N/A
21	N/A	N/A
22	N/A	N/A
23	N/A	N/A
32	-0.942	0.219
Queens		
24	N/A	N/A
25	N/A	N/A
26	N/A	N/A
27	0.884	0.047*
28	N/A	N/A
29	-0.854	0.031*
30	0.158	0.765
Staten Island		
31	N/A	N/A

Note: * p \leq 0.05, ** p \leq 0.01

No Child Left Behind Act

Under the federally-mandated No Child Left Behind Act of 2001 (NCLB), students may transfer from schools identified as Title I Schools in Need of Improvement (SINI) or Schools Under Registration Review (SURR). Through this form of public school choice, students in the city can then attend a school that is not in need of improvement either within the local community school district or outside of the local school district. As shown in Figure 3 below, the number of NCLB transfers in the New York City Public Schools has steadily increased since the 2004-05 school year when there were 551 transfers. In 2008-09, there were 3,581 transfers in the New York City Public Schools, which is more than six times than that reported in 2004-05. A total of 1,294 transfers (36.1%) were made within the same community school district.

Figure 3
NCLB Transfers by Year in the New York City Public Schools



In Table 3 following, the number of *net* transfers by community school district is shown as recorded for the 2008-09 academic year. Positive values indicate a net gain in students for a school district while negative values indicate a net loss in students. The table does not include student transfers occurring within a community school district, as these transfers would not affect the enrollment projections. Of course, in-district transfers would have an impact on enrollment at the building level, however, that is beyond the scope of our analysis.

As Table 3 shows, District 25 in Queens lost the most students while District 26, also in Queens, gained the most students in 2008-09. Other large gains occurred in Districts 20 and 22 in Brooklyn. By borough, Queens gained the most students while Brooklyn lost the most students. Consistent with data in previous years, the net gain or loss of students in Manhattan and Staten Island was minimal.

Table 3
Net Transfers by Community School District in 2008-09

Community School District	Net Gain or Loss of Students	Community School District	Net Gain or Loss of Students
1	+24	24	+42
2	+8	25	-136
3	+81	26	+179
4	-7	27	-23
5	-52	28	+51
6	-24	29	+40
Manhattan Totals	+30	30	-41
7	-23	Queens Totals	+112
8	-82	31	-3
9	-68	Staten Island Totals	-3
10	+34		
11	+61		
12	+22		
Bronx Totals	-56		
13	+76		
14	-22		
15	-70		
16	+5		
17	-45		
18	-52		
19	-111		
20	+100		
21	-19		
22	+127		
23	-57		
32	-15		
Brooklyn Totals	-83		

Source: New York City School Construction Authority

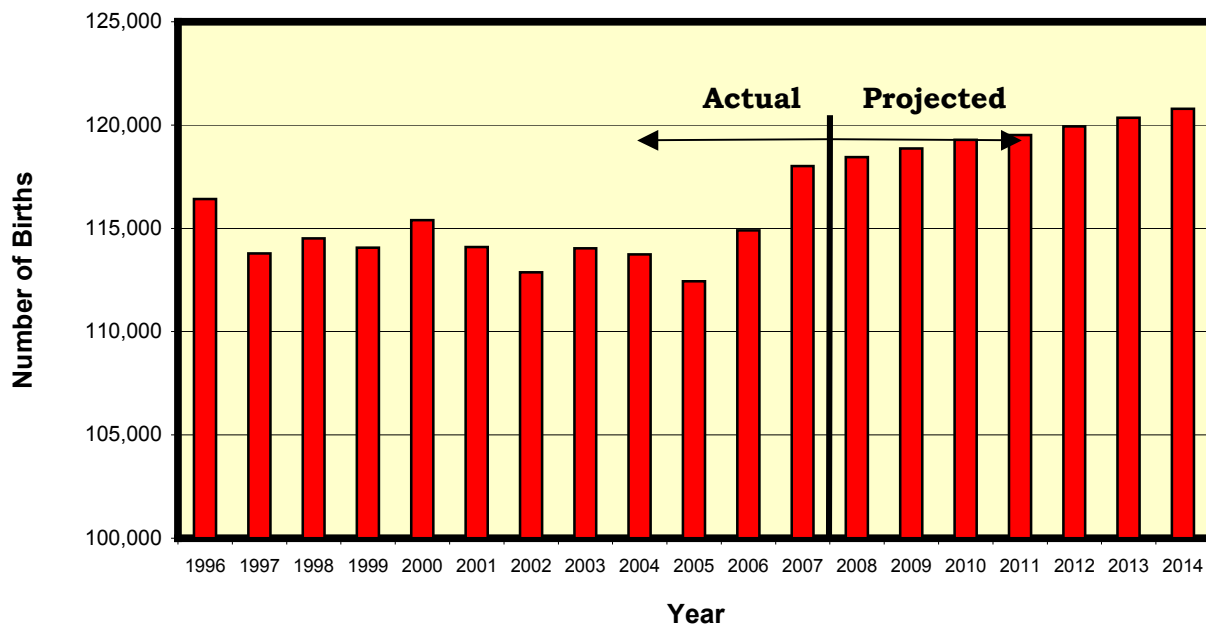
The computed survival ratios used to project future enrollment do capture student movement patterns due to inter-district transfers. However, the ratios assume that the historical patterns (gains or losses) will continue into the future. For example, if a district, which has

consistently received more students than it loses, begins to have a change in trend, future enrollment projections in that district are likely to differ from actual counts.

Birth Data

Historical birth data for 1996-2007, provided by the New York City Department of Health and Mental Hygiene (DHMH), is shown below in Figure 4. Data for 2008 were not yet available. Birth data are needed to calculate survival ratios for each birth-to-pre-kindergarten or birth-to-kindergarten cohort. Future birth rates for the years 2008-2014 were estimated to project pre-kindergarten and kindergarten cohorts through the 2018-19 school year. The DHMH birth data were geocoded, which is the assignment of geographic coordinates to a birth mother based on her residence, so that birth counts by race could be tabulated for each of the 32 community school districts. The race of the child was determined by the mother's ethnicity and was categorized as Hispanic, Asian/Pacific Islander, White Non-Hispanic, Black Non-Hispanic, or Other/Unknown Ethnicity. In some instances, the mother's place of residence and/or race were unknown and were reassigned into the local community districts based on historical proportions.

Figure 4
New York City Birth History and Projections
1996-2014

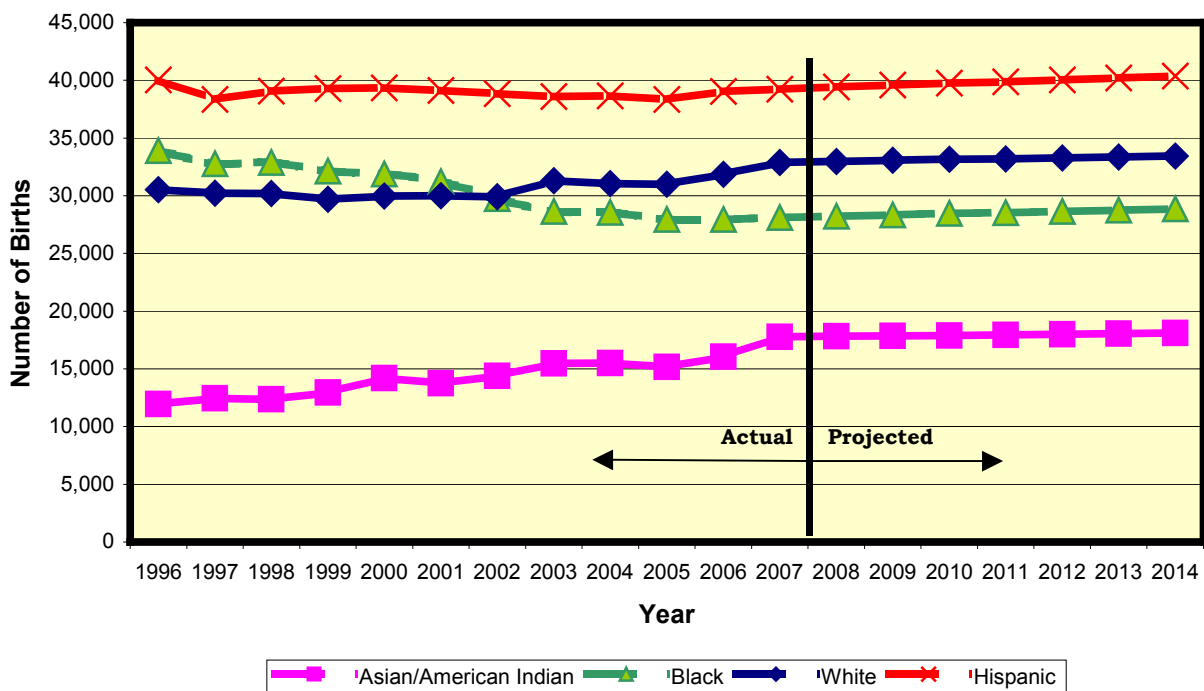


In the last two years, the number of births in New York City has been rising. The number of births in 2007 was 118,021. Since 1996, the number of births has ranged from a low of 112,434 in 2005 to 118,021 in 2007. It is not clear whether the increase in the number of births is the beginning of a new trend or whether the 2007 data lies in the upper limits of the recent

historical range of the number of births in New York City. Using population projections of females of childbearing ages (15-49) and age-specific fertility rates by borough provided by the New York City Department of Planning, estimated birth counts from 2008-2014 were computed. Using this model, the number of citywide births is projected to increase to 120,780 by 2014.

When analyzing births by race, the number of births to Blacks decreased from 1996-2005 as shown in Figure 5. However, in 2006 and 2007, the number of births to Blacks increased, albeit a small gain of 169 children over the two-year period. Births to Asians/American Indians continue to increase. The number of births to Asians/American Indians has increased from 11,942 in 1996 to 17,786 in 2007, a gain of 5,844 births. Non-Hispanic White births, which had been fairly consistent, increased to 32,877 in 2007. In 2002, Whites surpassed Blacks in having the 2nd largest number of births in New York City and are projected to maintain that status. Regarding Hispanics, the number of births has been relatively consistent, ranging from 38,336 to 40,036 from 1996-2007. Hispanics are currently, and are projected to continue being, the ethnicity with the greatest number of births in New York City.

Figure 5
New York City Historical and Projected Births by Race
1996-2014



Natural increase, which is an increase in population due to more births and less mortality, is displayed in Table 4 for each of the five boroughs and New York City from 2004 to 2008. The United States Census Bureau provides yearly estimates on the number of births and deaths occurring in New York City. The annual number of births reported is slightly more than shown

in Figure 4. As Table 4 illustrates, the natural increase in New York City continues to be approximately 60,000 persons per year. At the borough level, the greatest natural increase has annually occurred in Brooklyn and Queens respectively.

Table 4
Natural Increase in New York City from 2004 to 2008

Year	Borough	Number of Births	Number of Deaths	Natural Increase
2004	Manhattan	20,720	10,755	9,965
	Bronx	22,599	9,928	12,671
	Brooklyn	39,779	17,752	22,027
	Queens	30,787	15,270	15,517
	Staten Island	5,970	3,561	2,409
	New York City	119,855	57,266	62,589
2005	Manhattan	20,426	10,909	9,517
	Bronx	22,046	9,484	12,562
	Brooklyn	39,646	17,373	22,273
	Queens	30,238	15,342	14,896
	Staten Island	5,687	3,593	2,094
	New York City	118,043	56,701	61,342
2006	Manhattan	20,349	10,963	9,386
	Bronx	22,131	9,690	12,441
	Brooklyn	39,260	17,356	21,904
	Queens	29,772	14,990	14,782
	Staten Island	5,768	3,531	2,237
	New York City	117,280	56,530	60,750
2007	Manhattan	20,979	11,201	9,778
	Bronx	22,346	9,782	12,564
	Brooklyn	39,309	17,879	21,430
	Queens	29,603	15,508	14,095
	Staten Island	5,959	3,597	2,362
	New York City	118,196	57,967	60,229
2008	Manhattan	21,296	11,174	10,122
	Bronx	23,097	9,974	13,123
	Brooklyn	40,744	18,149	22,595
	Queens	30,226	15,785	14,441
	Staten Island	6,006	3,664	2,342
	New York City	121,369	58,746	62,623

Source: United States Census Bureau

Immigration

As shown in Table 5, the percentage of foreign-born residents in New York City has increased since 1990. In the table below, data from 1990 and 2000 are from the decennial census while data from 2007 are from the American Community Survey (ACS). The ACS, which

replaced the long form on the decennial census, collects information on a sample and therefore is subject to sampling error. In 1990, 28.4% of the population in New York City was foreign-born, which was nearly 2.1 million people. By 2000, the percentage of foreign-born persons in New York City increased to 35.9%. The 2007 ACS has estimated the number of foreign-born persons to be approximately 3 million, which corresponds to roughly 37% of the New York City population.

Table 5
Number and Percent of Foreign-Born Persons in New York City

Year	New York City Foreign-Born	Total New York City Population	Percent Foreign-Born
1990	2,082,931	7,322,564	28.4%
2000	2,871,032	8,008,278	35.9%
2007	3,047,676	8,274,527	36.8%

Sources: 1990 and 2000 Censuses, 2007 American Community Survey

According to the 2000 Census Public Use Microdata Sample (PUMS), 84.9% of all children under the age of 18 in New York City were native-born, which includes all private and public school children. In the 2007 American Community Survey, the percentage of native-born children under 18 was 90.9%, indicating that only 9.1% are foreign-born. Since approximately 37% of New York City residents were foreign-born in 2007 as documented in Table 5 above, this would indicate that a large percentage of New York City school children are likely to be second-generation immigrants.

When the number of foreign-born persons is analyzed at the borough level (Table 6), Queens had the largest number of foreign-born persons in 2007, which corresponds to 36.0% of the foreign-born population in New York City. Brooklyn had the second greatest number of foreign-born persons, corresponding to 30.9% of the foreign-born population. While Manhattan was the third largest source of foreign-born persons in 2007, the Bronx is approaching that rank. Staten Island, which had the smallest number of foreign-born persons of the five boroughs, has had a 136% gain in its foreign-born population since 1990.

Table 6
Number of Foreign-Born Persons by Borough

Year	Manhattan	Bronx	Brooklyn	Queens	Staten Island
1990	383,866	274,793	672,569	707,153	44,550
2000	452,440	385,827	931,769	1,028,339	72,657
2007	471,714	431,061	941,966	1,097,814	105,121

Sources: 1990 and 2000 Censuses, 2007 American Community Survey

Using data from the 2000 Census and the 2007 ACS, Table 7 lists the place of birth of the New York City foreign-born population for the five most-reported countries. In New York City, the Dominican Republic and China continue to be the largest sources of foreign-born persons. In 2007, the Dominican Republic was the largest source of foreign-born persons in Manhattan and the Bronx while China was the largest source in Brooklyn and Queens. Mexico, which was the fifth largest source of foreign-born persons in 2000, was the third largest source in 2007. Mexico was the largest source of foreign-born persons in Staten Island and the third largest source of foreign-born persons in Manhattan and the Bronx in 2007. Jamaica is the fourth largest source of foreign-born persons in New York City and is the second largest source of foreign-born persons in the Bronx and Brooklyn. While Guyana was the fourth largest source of foreign-born persons in New York City in 2000, Guyana dropped to the fifth largest source in 2007. Guyana was the third largest source of foreign-born persons in Queens in 2007 behind China and Ecuador.

Table 7
New York City Foreign-Born Population Place of Birth
for Five Largest Sources for 2000 and 2007

Country	2000		2007	
	Number	Percent of Total	Number	Percent of Total
Dominican Republic	369,186	12.9%	358,376	11.8%
China	261,551	9.1%	301,815	9.9%
Mexico	122,550	4.3%	178,713	5.9%
Jamaica	178,922	6.2%	165,348	5.4%
Guyana	130,647	4.6%	137,925	4.5%
Sum of Top 5 Countries	1,062,856	37.1%	1,142,177	37.5%
Sum of All Countries	2,871,032	100.0%	3,047,676	100.0%

Sources: United States Census Bureau (2000), 2007 American Community Survey

In Table 8, estimated net internal migration and net international migration data from 2004 to 2008 is shown. As the table shows, there has been positive net international migration in New York City in each of the last five years but negative net internal migration as well. Net international migration is the difference between people moving into New York City from other countries and people leaving the city to reside in other countries. Positive net international migration indicates that more people are entering from other countries than leaving New York City to reside abroad. On the other hand, net internal migration is the difference between people moving into New York City from other parts of the United States and people leaving the city to reside in other United States locations other than New York City. Negative net internal migration indicates that more people are moving out of New York City to other parts of the United States than are coming into the city from other parts of the country.

While New York City received a net of nearly 73,000 people from other countries in 2008, a net of approximately 76,000 people left the city to other regions of the United States. When the data from net international migration and net internal migration are added together, the resulting value is total net migration. In the last five years, there has been negative total net migration in New York City. However, as the table illustrates, there was a sharp decline in the negative net internal migration in 2008, which resulted in a negative total net migration just exceeding 3,000 persons. This is markedly lower than the negative total net migration experienced in New York City from 2004-2007.

Table 8
Estimated Net International and Net Internal Migration
in New York City from 2004 to 2008

Year	Net International Migration	Net Internal Migration	Total Net Migration
2004	+82,077	-160,502	-78,425
2005	+84,095	-172,845	-88,750
2006	+86,412	-151,441	-65,029
2007	+86,318	-119,956	-33,638
2008	+72,850	-76,018	-3,168

Source: United States Census Bureau

In Table 9 following, total net migration is provided by borough from 2004-2008. Only the Bronx and Brooklyn had negative total net migration in 2008. Both of these boroughs have experienced smaller negative total net migrations since 2005. After four years of negative total net migration, Queens had a positive total net migration of 3,187 in 2008. Staten Island had the second largest positive total net migration of the five boroughs with 2,160 while Manhattan had the smallest positive total net migration of the five boroughs with 252.

Table 9
Total Net Migration by Borough

Year	Manhattan	Bronx	Brooklyn	Queens	Staten Island
2004	+2,484	-17,669	-34,796	-28,003	-441
2005	-1,757	-22,279	-36,534	-27,229	-951
2006	+1,391	-17,533	-27,524	-20,584	-779
2007	-1,239	-10,013	-15,423	-7,302	+339
2008	+252	-5,777	-2,990	+3,187	+2,160

Source: United States Census Bureau

While New York City is gaining people due to natural increase, it continues to lose people due to migration. When the results from Tables 4 and 8 are combined, the result is the estimated net population change in New York City, which is shown in Table 10. While there was a negative population change from 2004-2006, an estimated gain of more than 86,000 persons has occurred in the last two years. Since natural increase has been fairly constant over the last five years, this change is mainly due to the reduction of the negative net internal migration experienced in New York City from 2007-2008 as shown in Table 8.

Table 10
Estimated Net Population Change in New York City
Due to Migration and Natural Increase

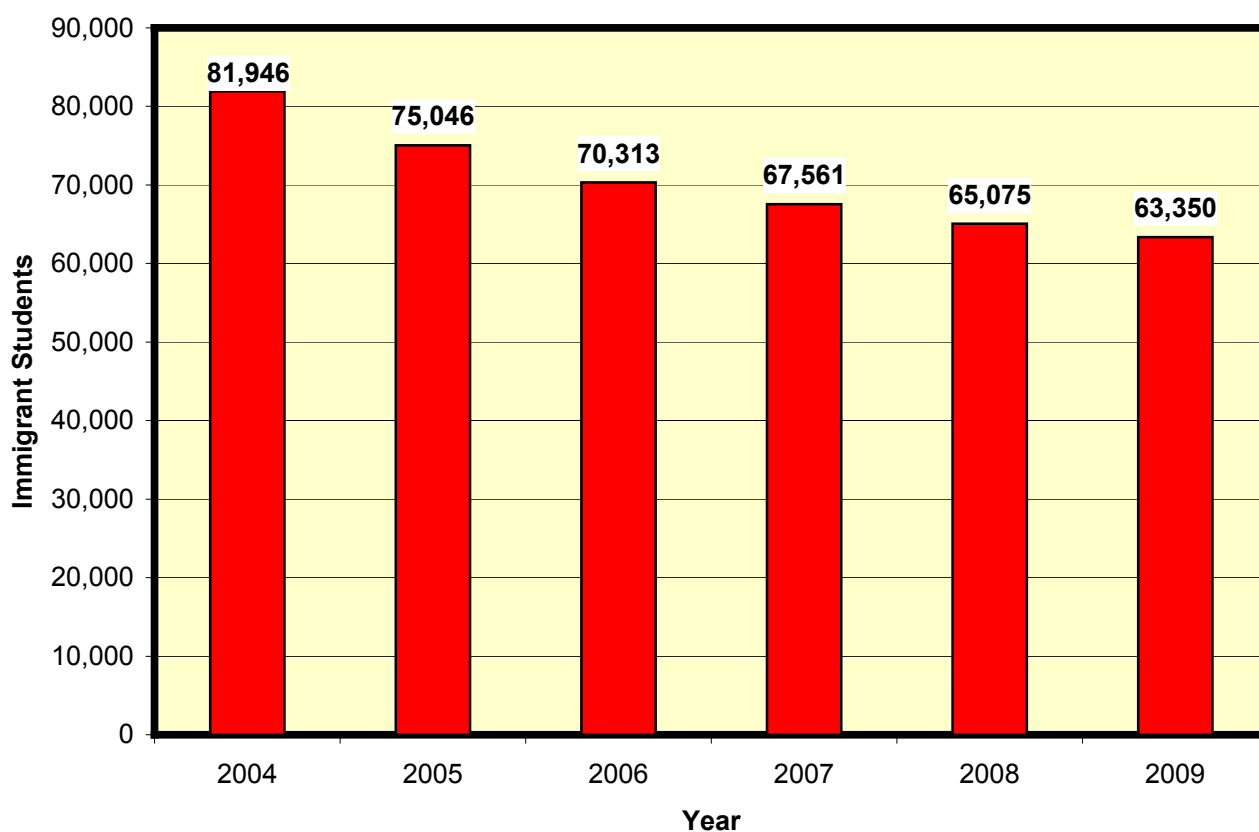
Year	New York City	Manhattan	Bronx	Brooklyn	Queens	Staten Island
2004	-15,836	+12,449	-4,998	-12,769	-12,486	+1,968
2005	-27,408	+7,760	-9,717	-14,261	-12,333	+1,143
2006	-4,279	+10,777	-5,092	-5,620	-5,802	+1,458
2007	+26,591	+8,539	+2,551	+6,007	+6,793	+2,701
2008	+59,455	+10,374	+7,346	+19,605	+17,628	+4,502

At the borough level, all five boroughs experienced a net gain in population in 2008. Brooklyn and Queens experienced the greatest gains in population in 2008. While Brooklyn, Queens, and the Bronx had losses in population from 2004-2006, these boroughs experienced gains in the total population in 2007 and 2008. From 2004-2008, both Manhattan and Staten Island experienced a gain in population each year.

Regarding the school-age population, the New York City Public Schools collects data on foreign-born students by using the Emergency Immigrant Survey. This survey collects data on a student's country of origin and the local community school district that he or she is registered.

As shown in Figure 6, the number of immigrant students in the New York City Public Schools is steadily declining, although the annual decline has been small since 2007. In the March 2009 survey, a total of 63,350 immigrant students were reported, which is 18,596 fewer than in 2004.

Figure 6
Number of Immigrant Students in the New York City Public Schools from 2004-2009



Source: New York City Public Schools Emergency Immigrant Surveys

In Table 11, the number of immigrant students by country is shown for the last three school years for the New York City Public Schools. Only the ten largest sources are listed, all of which provide more than 1,500 students. In the 2008-09 school year, 64.4% of the immigrant children in the school district came from the ten largest sources. The Dominican Republic continues to be the largest source, providing 17.8% of the immigrant students. However, the number of immigrant students from the Dominican Republic has slowly declined in the last two years. China, which is the second largest source, provided 12.3% of the immigrant student population in 2008-09. The five largest sources of students from the Emergency Immigrant Survey in 2008-09 are similar to the five largest sources of New York City foreign-born persons as reported in the 2007 American Community Survey and displayed previously in Table 7 with the exception of Bangladesh. While the Dominican Republic, China, Mexico, and Jamaica are

ranked first through fourth respectively in both tables, Guyana is the fifth largest source of foreign-born persons in New York City while Bangladesh is the fifth largest source of immigrant students in the New York City Public Schools. Of the top five sources in 2008-09, only China and Bangladesh have provided more immigrant students each year since 2006-07, which is contrary to the overall declining trend of the number of immigrant students in New York City.

Table 11
Number of Immigrant Students from Countries of Largest Sources
in the New York City Public Schools from 2006-07 to 2008-09

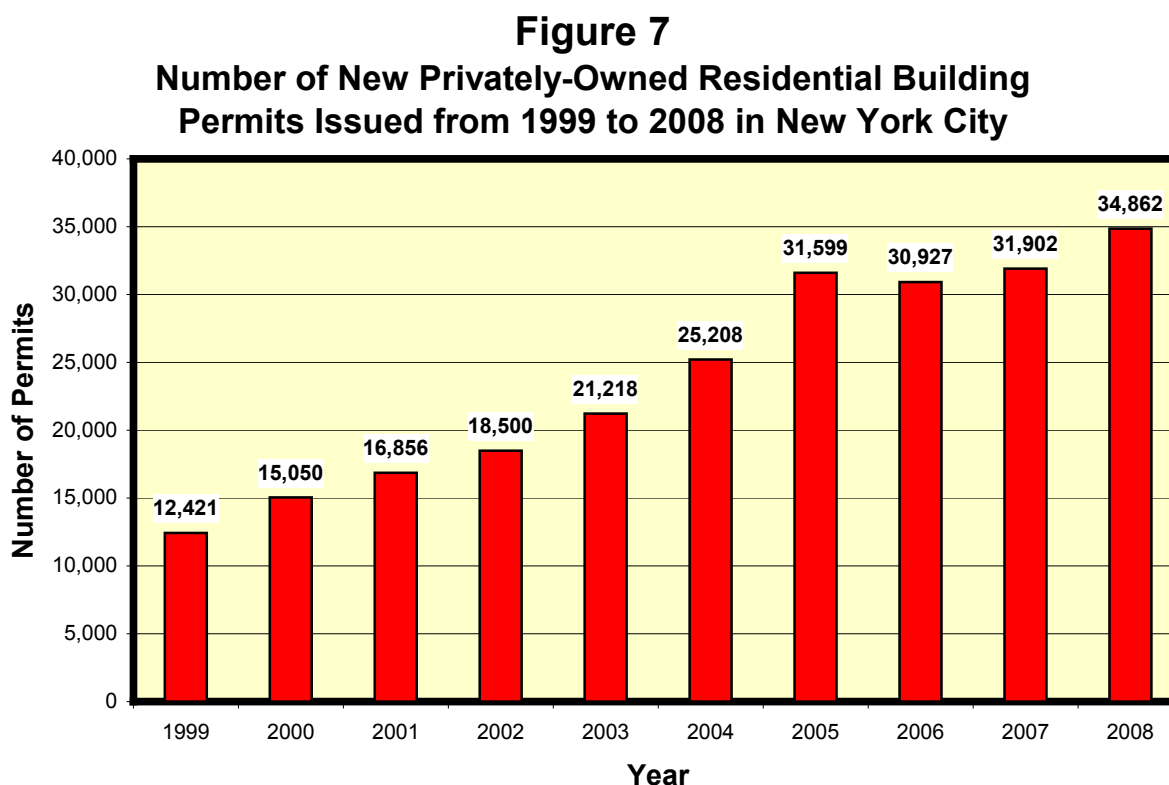
2006-07			2007-08			2008-09		
Country	Number of Students	Percent of Total	Country	Number of Students	Percent of Total	Country	Number of Students	Percent of Total
Dominican Republic	12,552	18.6%	Dominican Republic	11,475	17.6%	Dominican Republic	11,258	17.8%
China	7,588	11.2%	China	7,646	11.7%	China	7,790	12.3%
Mexico	4,613	6.8%	Mexico	4,235	6.5%	Mexico	3,791	6.0%
Guyana	3,903	5.8%	Jamaica	3,406	5.2%	Jamaica	3,494	5.6%
Jamaica	3,743	5.5%	Guyana	3,124	4.8%	Bangladesh	3,067	4.8%
Ecuador	2,738	4.1%	Ecuador	2,803	4.3%	Guyana	2,764	4.4%
Bangladesh	2,504	3.7%	Bangladesh	2,746	4.2%	Ecuador	2,747	4.3%
Haiti	1,970	2.9%	Haiti	2,138	3.3%	Haiti	2,440	3.9%
Pakistan	1,626	2.4%	India	1,594	2.4%	Pakistan	1,836	2.9%
Trinidad and Tobago	1,623	2.4%	Pakistan	1,534	2.4%	India	1,592	2.5%
Sum of Top 10 Countries	42,860	63.4%	Sum of Top 10 Countries	40,701	62.5%	Sum of Top 10 Countries	40,779	64.4%
Sum of All Countries	67,561	100.0%	Sum of All Countries	65,075	100.0%	Sum of All Countries	63,350	100.0%

Source: New York City Public Schools Emergency Immigrant Survey

New Housing

In the last ten years (1999-2008), the number of building permits issued annually for privately-owned residential construction has nearly tripled in New York City. As shown in Figure 7, 34,862 permits were issued in 2008 as compared to 12,421 in 1999. In the shorter term, 2005-2008, the number of residential building permits issued has been relatively constant, ranging between 31,000-35,000 per year. However, it appears that the general downturn in the economy may affect the new housing market in New York City. Through August 2009, only 4,176 permits were issued for privately-owned residential construction in New York City. While

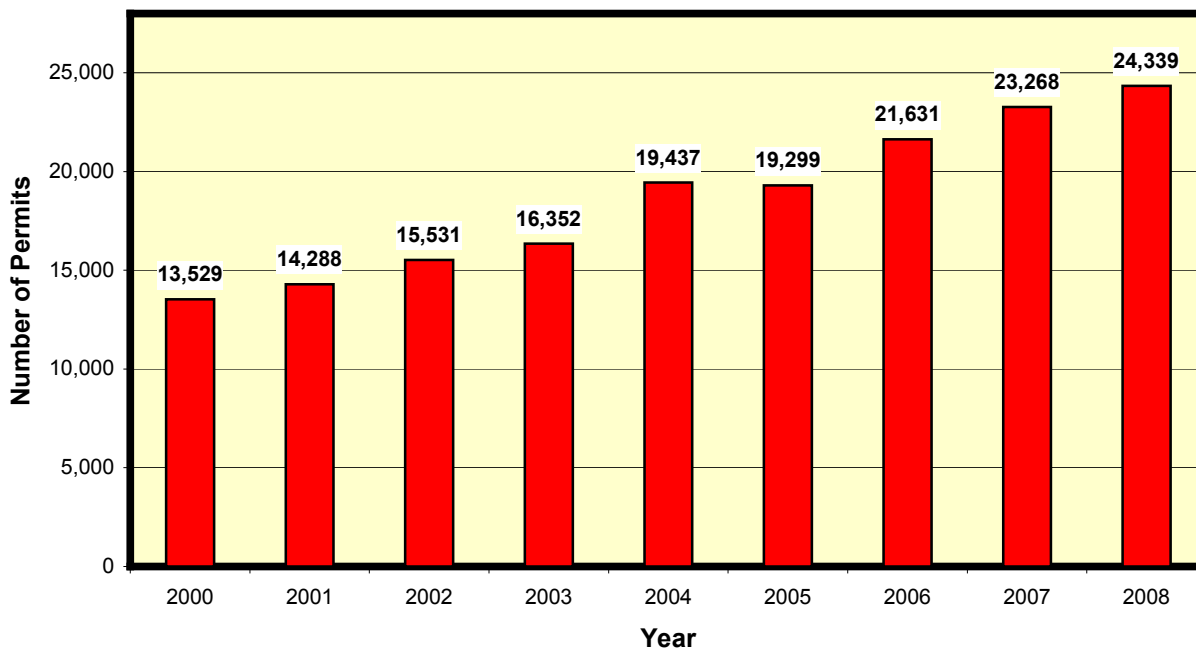
this value is not shown in the figure since the year is incomplete, there appears to be a dramatic reduction in the number of permits issued for new construction.



Source: New York City Department of Housing Preservation and Development

The issuance of a permit does not guarantee that a residence is constructed. Often, there is a lag time between the issuing of a permit and when the unit is actually constructed. With the overall slowdown of the housing market, it is conceivable that many builders may delay new construction until the housing market is more favorable. In Figure 8 following, the number of new units constructed in new buildings in New York City from 2000-2008 is shown. It should be noted that Figure 8 shows the number of new separate residential units, not buildings, that were constructed during this time period. Since 2000, nearly 168,000 new building units have been constructed in New York City. Despite the housing market slowdown, the number of new building units per year has been steadily increasing from 13,529 in 2000 to 24,339 in 2008.

Figure 8
Number of New Residential Units in New Residential Buildings
from 2000 to 2008 in New York City

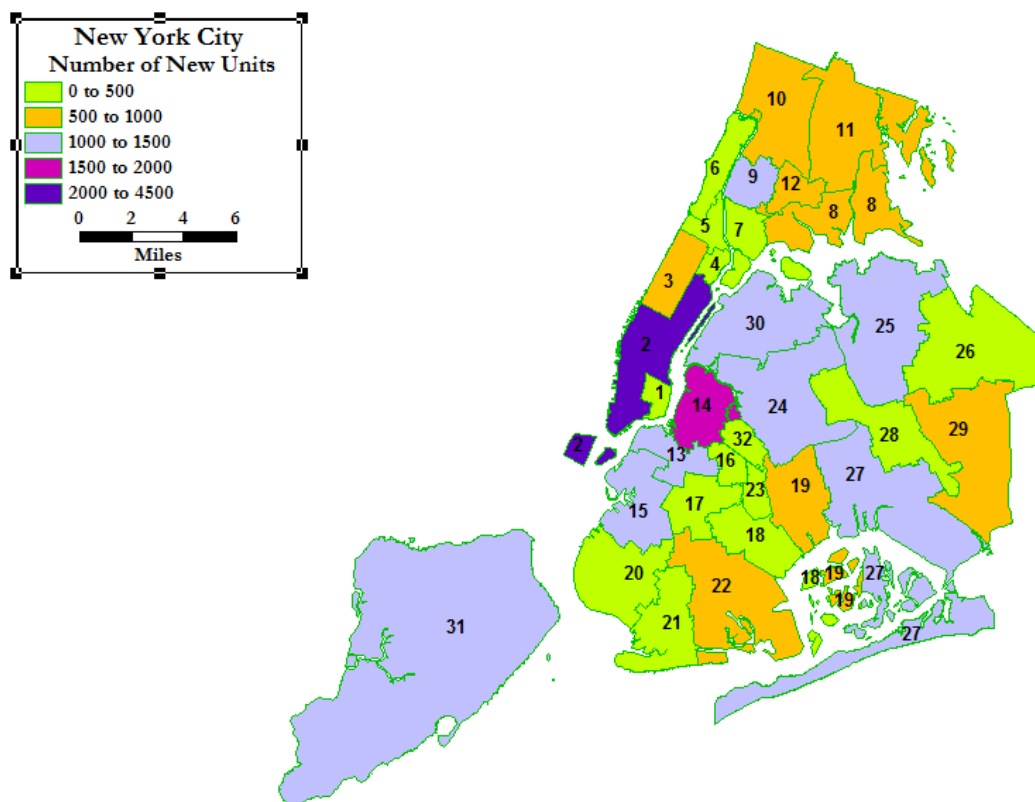


Source: United States Census Bureau - New Construction Statistics

In Figure 9 following, the number of new housing units constructed in 2008 is shown by community school district. District 2 in Manhattan and District 14 in Brooklyn had the most housing units built in 2008 with 4,280 units and 1,916 units respectively.

If the number and type of new housing units planned for the future greatly exceeds that which was built historically, school enrollment is likely to rise, assuming all other variables are controlled. However, if the number and type of future housing units is similar to that which was built historically, it is unlikely that a significant enrollment increase would occur since the historical cohort-survival ratios do capture enrollment growth due to new housing.

Figure 9
Number of New Units by Community School District in 2008



Historical and Projected Enrollment in the Five Boroughs

In Table 12 and Figure 10 following, historical enrollment from 2003-04 through 2008-09 and projections from 2009-10 through 2018-19 are shown for each of the five boroughs. Table 12 also shows the projected numerical and percentage change in enrollment in the next five and ten years in comparison to actual enrollment in 2008-09. Queens and Staten Island are the only boroughs projected to have a greater enrollment in 2018-19 than in 2008-09.

In 2008-09, Brooklyn had the largest enrollment of the five boroughs, 311,525 students. Since 2003-04, Brooklyn's enrollment has steadily declined, losing nearly 30,000 students. Over the ten-year projection period, enrollment is projected to decline through 2013-14 before reversing trend. In the first five years of the projection period, a loss of 12,953 students (-4.2%) is projected. However, a gain of 7,456 students (+2.5%) is projected for the remaining five years of the projection period. In 2018-19, enrollment in Brooklyn is projected to be 306,028, which would be a loss of 5,497 students from the 2008-09 total. Despite the overall decline, Brooklyn is projected to have the largest enrollment of the five boroughs.

Table 12
Historical and Projected Enrollment by Borough

	Manhattan	Bronx	Brooklyn	Queens	Staten Island
HISTORICAL					
2003-04	165,378	228,372	341,433	279,708	61,801
2004-05	165,645	227,231	336,342	278,353	61,271
2005-06	161,909	223,917	327,846	274,674	60,862
2006-07	159,913	221,814	319,941	272,759	60,814
2007-08	159,933	219,469	316,660	272,551	61,557
2008-09	158,235	217,684	311,525	274,939	62,115
PROJECTED					
2009-10	155,188	214,477	306,884	275,449	62,352
2010-11	151,440	212,398	303,005	276,003	62,710
2011-12	148,734	210,768	300,374	277,664	63,270
2012-13	146,403	210,362	299,341	280,233	63,857
2013-14	144,763	210,185	298,572	282,574	64,587
5-Year Change	-13,472	-7,499	-12,953	+7,635	+2,472
%	-8.5%	-3.4%	-4.2%	+2.8%	+4.0%
2014-15	144,054	210,920	299,059	285,314	65,368
2015-16	143,514	211,888	299,976	288,672	66,289
2016-17	143,271	213,230	301,595	292,292	67,321
2017-18	143,586	215,017	303,593	295,901	68,335
2018-19	144,063	216,982	306,028	299,140	69,390
5-Year Change	-700	+6,797	+7,456	+16,566	+4,803
%	-0.5%	+3.2%	+2.5%	+5.9%	+7.4%
10-Year Change	-14,172	-702	-5,497	+24,201	+7,275
%	-9.0%	-0.3%	-1.8%	+8.8%	+11.7%

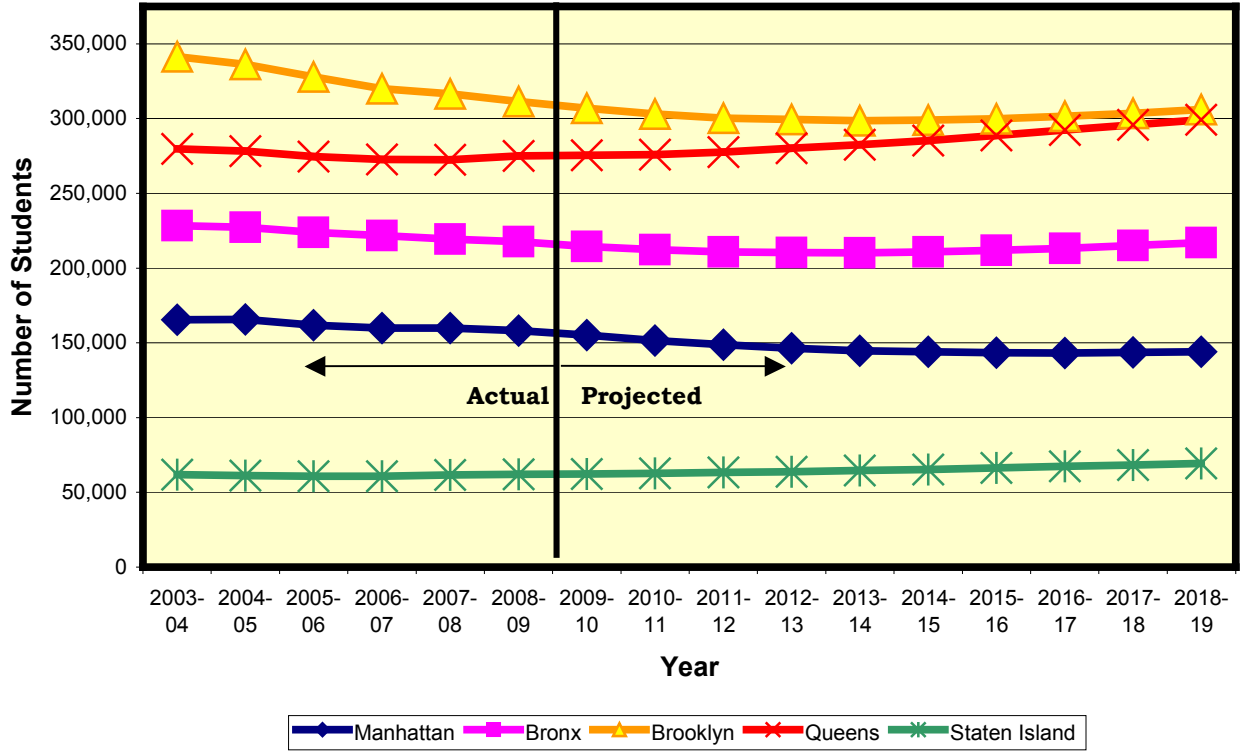
Queens, which had the 2nd largest enrollment with 274,939 students in 2008-09, is projected to steadily rise in enrollment over the ten-year projection period. Enrollment had been steadily declining in Queens since 2003-04 before rising in 2008-09. From 2003-04 to 2008-09, there has been a loss of 4,769 students. In the first five years of the projection period, a gain of 7,635 students (+2.8%) is projected. An additional gain of 16,566 students (+5.9%) is projected for the remaining five years of the projection period. In 2018-19, enrollment in Queens is projected to be 299,140, which would be a gain of 24,201 students from the 2008-09 total.

In the Bronx, which had the 3rd largest enrollment with 217,684 students in 2008-09, enrollment is projected to decline through 2013-14 before reversing trend. Enrollment in the Bronx has steadily declined since 2003-04, losing approximately 10,700 students. In the first five years of the projection period, a loss of 7,499 (-3.4%) students is projected. However, a gain of 6,797 students (+3.2%) is projected for the remaining five years of the projection period. Over the ten-year projection period, enrollment is projected to be 216,982 in 2018-19, which would be a loss of 702 students (-0.3%) since 2008-09.

Manhattan had the 4th largest enrollment with 158,235 students in 2008-09 and is projected to have the largest decline in enrollment. In general, enrollment has been declining since 2003-04. From 2003-04 to 2008-09, a loss of 7,143 students has occurred. Enrollment is projected to decline through 2016-17 before reversing trend. Over the next ten years, a loss of 14,172 students (-9.0%) is projected. The largest decline is projected in the first five years of the projection period where a loss of 13,472 students (-8.5%) is projected. A smaller decline of 700 students (-0.5%) is projected for the remaining five years of the projection period.

Staten Island, which had the fewest students (62,115) of the five boroughs in 2008-09, is projected to have steadily rising enrollment throughout the ten-year projection period, which is similar to Queens. Since 2003-04, enrollment in Staten Island has been fairly consistent, ranging between 60,814-62,115 students. In the next ten years, enrollment is projected to be 69,390, which would be a gain of 7,275 students (+11.7%) from the 2008-09 total. In the first five years of the projection period, a gain of 2,472 students (+4.0%) is projected while a greater gain of 4,803 students (+7.4%) is projected for the last five years of the projection period.

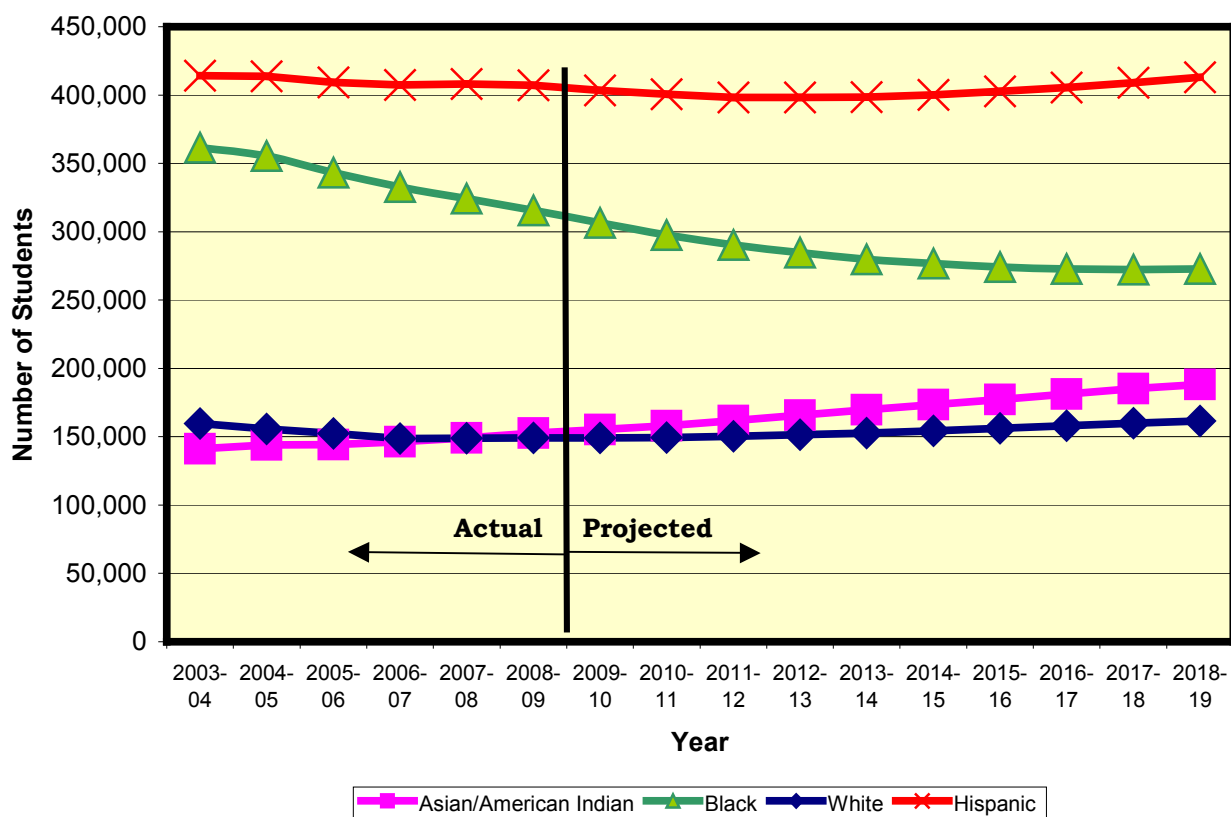
Figure 10
Historical and Projected Enrollment by Borough
2003-2018



Historical and Projected Enrollment by Race in New York City

Historical enrollment trends by race were analyzed from the 2003-04 school year through the 2008-09 school year. Figure 11 and Table 13 show the historical enrollment by race in the New York City Public Schools as well as the projected enrollment by race through 2018-19. As of October 2008, Hispanics were the largest ethnicity (39.7%) followed by Blacks (30.8%), whose enrollment has been steadily declining since 2003-04. In 2007-08, the Asian/American Indian student population, which has been steadily rising, surpassed Whites as the 3rd largest ethnic group in the New York City Public Schools. White enrollment increased slightly in both 2007-08 and 2008-09 after several years of declining enrollment.

Figure 11
New York City Historical and Projected Enrollment by Race
2003-2018



Since the 2003-04 school year, Black enrollment has declined by more than 46,000 students. During this same time period, White enrollment has declined by 10,560 students. Hispanic enrollment has declined on four occasions and increased on one occasion since 2003-

04, losing approximately 7,000 students during this time. On the contrary, the Asian/American Indian population has been steadily rising since 2003-04, gaining 11,408 students.

Table 13
New York City Historical and Projected Enrollment by Race

	Asians/ American Indians	Blacks	Hispanics	Whites
HISTORICAL				
2003-04	141,220	361,539	414,184	159,749
2004-05	144,017	355,447	413,707	155,671
2005-06	144,305	343,132	409,323	152,448
2006-07	146,321	332,715	407,485	148,720
2007-08	149,054	324,219	408,021	148,876
2008-09	152,628	315,495	407,186	149,189
PROJECTED				
2009-10	155,203	306,497	403,411	149,239
2010-11	158,101	297,632	400,507	149,316
2011-12	161,887	290,280	398,358	150,285
2012-13	165,869	284,626	398,306	151,395
2013-14	169,654	279,800	398,490	152,737
5-Year Change	+17,026	-35,695	-8,696	+3,548
%	+11.2%	-11.3%	-2.1%	+2.4%
2014-15	173,570	276,698	400,133	154,314
2015-16	177,311	274,282	402,593	156,153
2016-17	181,190	272,864	405,583	158,072
2017-18	185,109	272,246	409,097	159,980
2018-19	188,271	272,669	413,089	161,574
5-Year Change	+18,617	-7,131	+14,599	+8,837
%	+11.0%	-2.5%	+3.7%	+5.8%
10-Year Change	+35,643	-42,826	+5,903	+12,385
%	+23.4%	-13.6%	+1.4%	+8.3%

It is projected that the Black student population will steadily decline through 2017-18 before rising slightly in 2018-19. White and Asian/American Indian population are projected to increase throughout the entire projection period. Hispanic enrollment is projected to decline through 2012-13 before reversing trend and increasing for the remaining six years of the projection period.

As shown in Table 13, Blacks are projected to decline by nearly 43,000 students over the ten-year projection period while Hispanics are projected to increase by nearly 6,000 students. While the Hispanic student population is projected to decline by about 8,700 students in the first five years, they are projected to gain approximately 14,600 students in the last five years of the projection period. Asians/American Indians are projected to steadily rise throughout the projection period, gaining more than 35,600 students. Whites are also projected to steadily rise throughout the projection period, gaining more than 12,000 students.

Historical and Projected Enrollment by Race in the Five Boroughs

In Table 14 following, historical and projected enrollment by race is shown for each of the five boroughs. Table 14 also shows the projected numerical change in enrollment in the next ten years in comparison to actual enrollment in 2008-09.

In Manhattan, enrollment is projected to rise for the White and Asian/American Indian student populations and decline for both Hispanics and Blacks through 2018-19 as shown in Figure 12 and Table 14. Since 2003-04, the White and Asian/American Indian student populations have gained 1,977 and 1,408 students respectively. Whites replaced Asians/American Indians as the third largest ethnicity in Manhattan in the 2005-06 school year. Whites and Asians/American Indians are projected to steadily rise throughout the ten-year projection period, gaining 6,283 and 4,616 students respectively. On the other hand, Hispanic enrollment has declined by 4,946 students and Black enrollment has declined by 5,582 students since 2003-04. Over the ten-year projection period, Hispanic enrollment is projected to decline by 15,008 students while Black enrollment is projected to decline by 10,063 students. Although significant declines are projected in the Hispanic and Black student populations over the ten-year period, they will remain the largest and second largest ethnicities respectively in Manhattan. In 2008-09, Hispanics represented 49.0% of the Manhattan student population while Blacks represented 24.9%.

With respect to the Bronx, enrollment is projected to rise for the Asian/American Indian and Hispanic student populations, decline for Blacks, and remain nearly stable for Whites over the ten-year projection period as shown in Figure 13 and Table 14. Since 2003-04, the number of Hispanic students, which is the largest ethnic group in the Bronx, has declined by 2,320 students while the Black population has declined by 7,841 students. Over the ten-year projection period, Hispanic enrollment is projected to rise by 4,340 students while a decline of 7,687 Black students is projected. Reversals in the declining trend are projected in 2012-13 for the Hispanics and 2018-19 for the Blacks. Asians/American Indians replaced Whites as the third largest ethnicity in the Bronx in the 2005-06 school year. Since 2003-04, there has been a loss of 1,200 White students and a gain of 673 Asian/American Indian students. Whites are projected to

decline through 2013-14 before reversing trend in 2014-15, losing merely 11 students over the ten-year period. Asians/American Indians are projected to steadily rise and gain 2,656 students by 2018-19. It is projected that the Hispanic and Black student populations will remain the largest and second largest ethnicities respectively in the Bronx over the ten-year period. In 2008-09, Hispanics represented 60.5% of the Bronx student population while Blacks represented 30.6%, which totals more than 91% of the student population in the Bronx.

Figure 12
Manhattan Historical and Projected Enrollment by Race
2003-2018

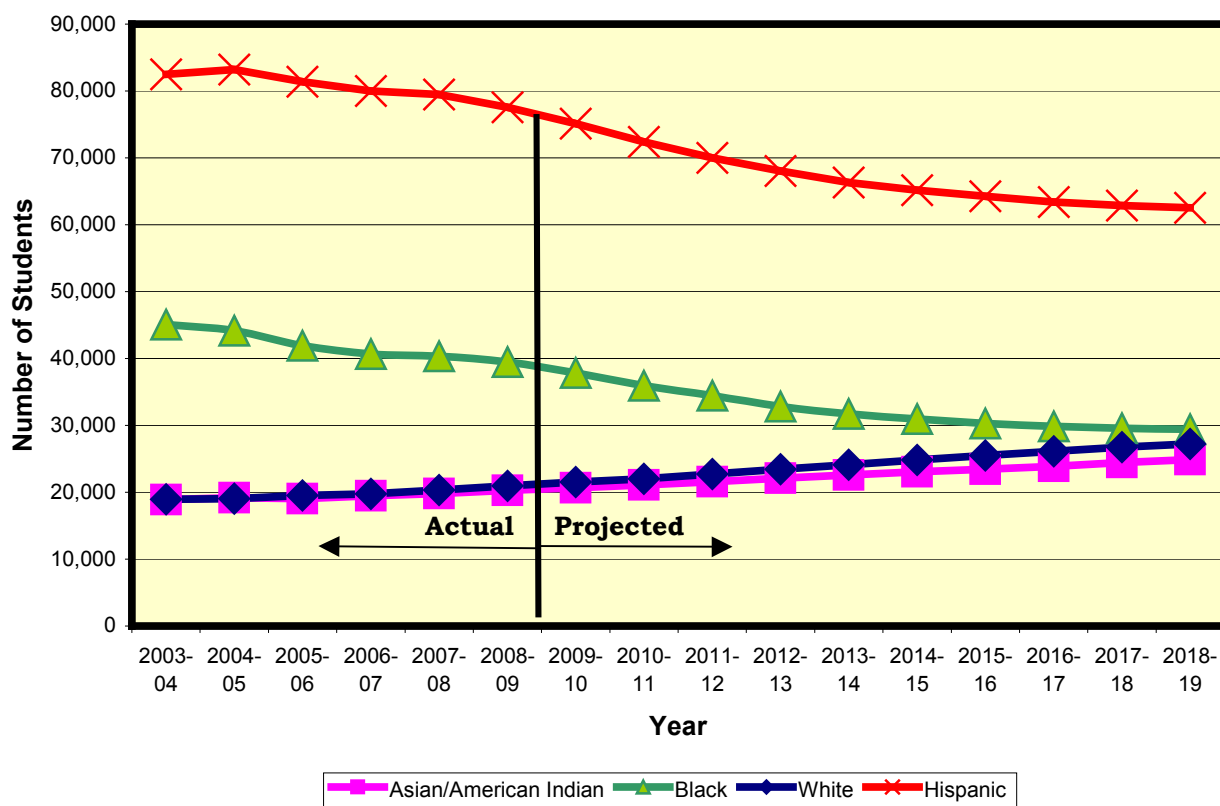
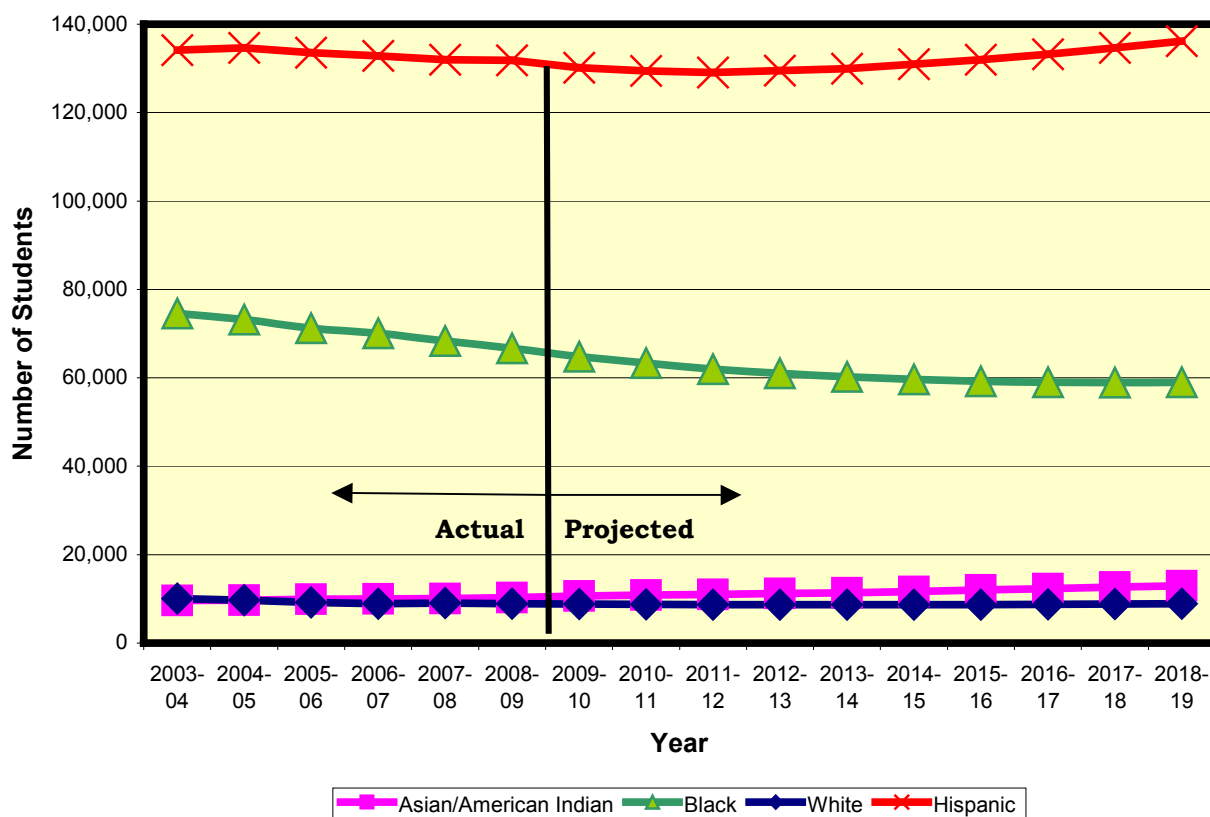


Table 14
Historical and Projected Enrollment by Race and Borough

	MANHATTAN					BRONX					BROOKLYN					
	Asians/ American Indians	Hispanics	Blacks	Whites	Asians/ American Indians	Hispanics	Blacks	Whites	Asians/ American Indians	Hispanics	Blacks	Whites	Asians/ American Indians	Hispanics	Blacks	Whites
2003-04	18,876	82,482	45,050	18,970	9,635	134,113	74,533	10,091	37,279	89,742	161,724	52,688				
2004-05	19,189	83,212	44,186	19,058	9,684	134,667	73,171	9,709	38,043	88,482	159,528	50,289				
2005-06	19,059	81,398	41,913	19,539	9,926	133,567	71,200	9,224	38,435	87,149	154,027	48,235				
2006-07	19,475	80,011	40,671	19,756	9,986	132,857	70,042	8,929	39,099	85,949	148,102	46,791				
2007-08	19,832	79,472	40,312	20,317	10,095	131,996	68,364	9,014	40,389	85,888	143,208	47,175				
2008-09	20,284	77,536	39,468	20,947	10,308	131,793	66,692	8,891	41,131	85,120	138,103	47,171				
PROJECTED																
2009-10	20,687	75,139	37,839	21,523	10,623	130,184	64,822	8,848	42,233	83,754	133,568	47,329				
2010-11	21,109	72,386	35,927	22,018	10,867	129,460	63,325	8,746	43,444	82,827	129,168	47,566				
2011-12	21,591	69,993	34,433	22,717	11,009	129,067	61,997	8,695	45,157	81,758	125,415	48,044				
2012-13	22,111	68,025	32,829	23,438	11,209	129,475	61,018	8,660	46,871	81,277	122,704	48,489				
2013-14	22,604	66,335	31,713	24,111	11,379	129,944	60,205	8,657	48,541	80,848	120,134	49,049				
2014-15	23,055	65,176	30,971	24,852	11,656	130,934	59,654	8,676	50,237	80,790	118,398	49,634				
2015-16	23,456	64,257	30,281	25,520	11,991	131,998	59,185	8,714	51,764	80,834	117,035	50,343				
2016-17	23,884	63,402	29,854	26,131	12,296	133,203	58,966	8,765	53,363	81,068	116,089	51,075				
2017-18	24,428	62,867	29,566	26,725	12,677	134,612	58,894	8,834	54,816	81,407	115,509	51,861				
2018-19	24,900	62,528	29,405	27,230	12,964	136,133	59,005	8,880	56,150	81,838	115,443	52,597				
10-year Change	+4,616	-15,008	-10,063	+6,283	+2,656	+4,340	-7,687	-11	+15,019	-3,282	-22,660	+5,426				

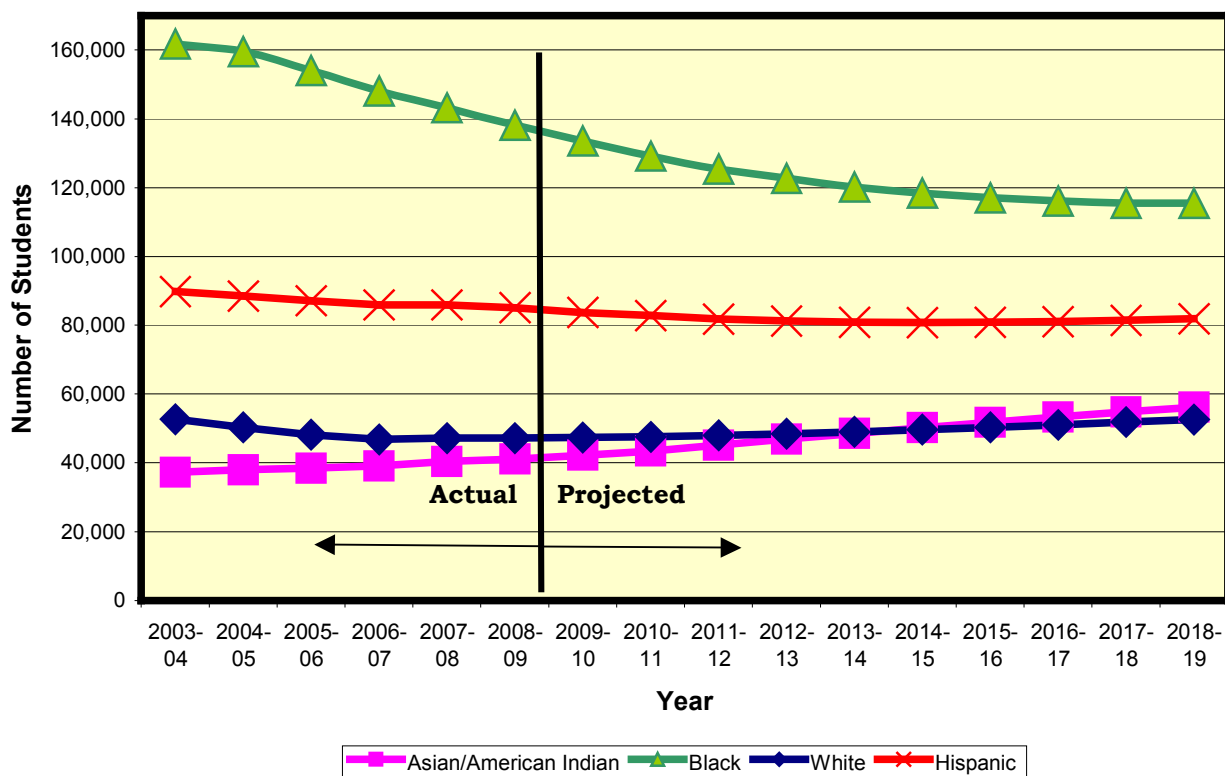
	QUEENS					STATEN ISLAND				
	Asians/ American Indians	Hispanics	Blacks	Whites	Asians/ American Indians	Hispanics	Blacks	Whites		
2003-04	70,794	96,438	70,440	42,036	4,636	11,409	9,792	35,964		
2004-05	72,311	95,569	68,870	41,603	4,790	11,777	9,692	35,012		
2005-06	72,029	95,176	66,452	41,017	4,856	12,033	9,540	34,433		
2006-07	72,740	96,045	64,425	39,549	5,021	12,623	9,475	33,695		
2007-08	73,656	97,188	62,765	38,942	5,082	13,477	9,570	33,428		
2008-09	75,664	98,732	61,776	38,767	5,241	14,005	9,456	33,413		
PROJECTED										
2009-10	76,304	99,705	60,805	38,635	5,356	14,629	9,463	32,904		
2010-11	77,271	100,527	59,749	38,456	5,410	15,307	9,463	32,530		
2011-12	78,627	101,564	58,940	38,533	5,503	15,976	9,495	32,296		
2012-13	80,088	102,891	58,523	38,731	5,590	16,638	9,552	32,077		
2013-14	81,439	104,077	58,120	38,938	5,691	17,286	9,628	31,982		
2014-15	82,807	105,347	57,982	39,178	5,815	17,886	9,693	31,974		
2015-16	84,197	106,999	57,976	39,500	5,903	18,505	9,805	32,076		
2016-17	85,623	108,844	58,022	39,803	6,024	19,066	9,933	32,298		
2017-18	87,027	110,578	58,224	40,072	6,161	19,633	10,053	32,488		
2018-19	87,998	112,426	58,587	40,129	6,259	20,164	10,229	32,738		
10-year Change	+12,334	+13,694	-3,189	+1,362	+1,018	+6,159	+773	-675		

Figure 13
Bronx Historical and Projected Enrollment by Race
2003-2018



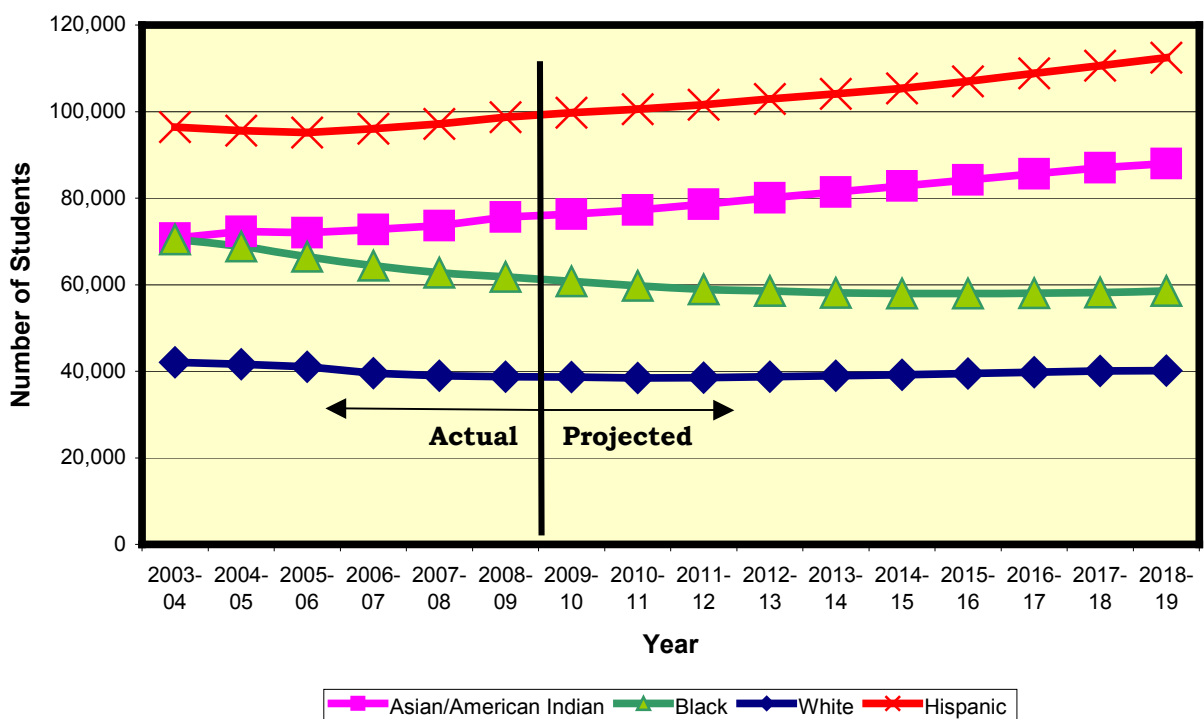
Brooklyn's enrollment is projected to rise for the Asian/American Indian and White populations and decline for Hispanics and Blacks as shown in Figure 14 and Table 14. Since the 2003-04 school year, the number of Black students has declined by 23,621 while Hispanic enrollment has dropped by 4,622. In addition, White enrollment has declined by 5,517 students. In the next ten years, Black and Hispanic enrollment are projected to decline, losing 22,660 and 3,282 students respectively. However, a reversal in trend is projected for Hispanic enrollment in 2015-16. White enrollment is projected to slowly rise throughout the projection period, resulting in a gain of 5,426 students. The Asian/American Indian student population, which is currently the smallest ethnicity in Brooklyn, has grown by 3,852 students since 2003-04. Asians/American Indians are projected to gain 15,019 students over the projection period and surpass Whites as the 3rd largest ethnicity in 2014-15. Blacks and Hispanics are expected to remain the largest and second largest ethnicities respectively over the ten-year period. In 2008-09, Blacks represented 44.3% of the Brooklyn student population while Hispanics represented 27.3%.

Figure 14
Brooklyn Historical and Projected Enrollment by Race
2003-2018



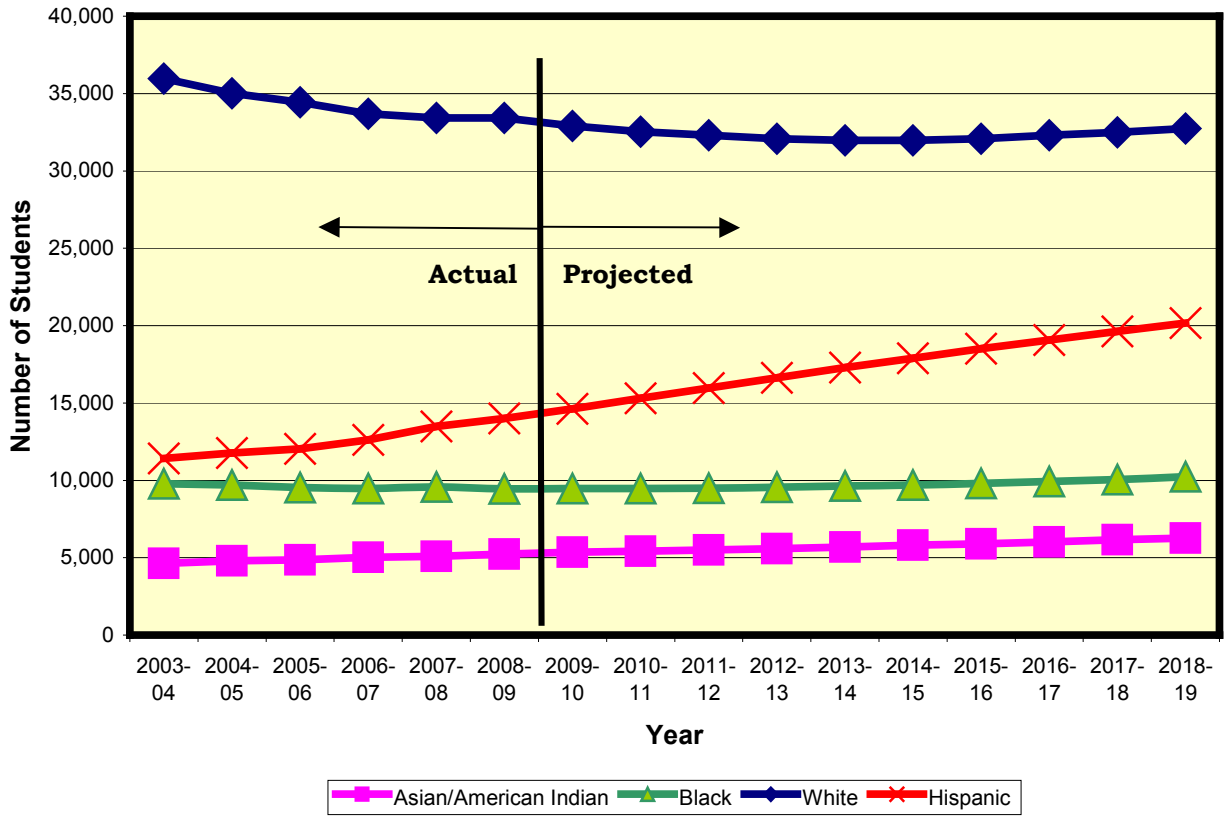
In Queens, the number of Asian/American Indian, Hispanic, and White students is projected to increase while the number of Black students is projected to decline as shown in Table 14 and Figure 15. Since 2003-04, there has been a gain of 4,870 Asian/American Indian students and 2,294 Hispanic students. The Asian/American Indian and Hispanic student populations are projected to steadily increase and gain 12,334 students and 13,694 students respectively. Since 2003-04, the number of Black students has declined by 8,664 while White enrollment has dropped by 3,269. In the next ten years, the Black student population is projected to decline through 2015-16 before reversing trend, declining by 3,189 students. White enrollment is projected to decline through 2010-11 before reversing trend, resulting in a gain of 1,362 students over the projection period. Hispanics and Asians/American Indians are expected to remain the largest and second largest ethnicities respectively over the ten-year period. Hispanics comprised 35.9% of the Queens student population in 2008-09 while Asians/American Indians represented 27.5% of the student population.

Figure 15
Queens Historical and Projected Enrollment by Race
2003-2018



In Staten Island, enrollment is projected to increase for Hispanic, Asian/American Indian, and Black students while decline for White students as shown in Table 14 and Figure 16. From 2003-04 to 2008-09, the number of Hispanic and Asian/American Indian students has been rising, gaining 2,596 and 605 students respectively. Both Hispanic and Asian/American Indian enrollment are projected to rise steadily throughout the projection period, gaining 6,159 and 1,018 students respectively. On the other hand, the number of Whites has declined by 2,551 students since 2003-04 while Black enrollment has dropped by 336 students. In the next ten years, White enrollment is projected to decline before reversing trend in 2015-16, declining by 675 students. Black enrollment is projected to slowly rise throughout the projection period, resulting in a gain of 773 students. Whites and Hispanics are expected to remain the largest and second largest ethnicities respectively over the ten-year period. Whites comprised 53.8% of the Staten Island student population in 2008-09 while Hispanics represented 22.5% of the student population.

Figure 16
Staten Island Historical and Projected Enrollment by Race
2003-2018



Projections by Community School District

In Table 15 following, enrollment projections are presented for each of the 32 community school districts, which includes grades PK-8 and special education students in grades PK-8. Projected grade-by-grade enrollments for each district are provided in the Appendix.

For each community school district, the historical enrollment in 2008-09 is presented along with the five-year and ten-year projections. Numerical gains/losses are also shown for the five-year and ten-year projections. Figure 17 also shows the projected ten-year change in enrollment by community school district. Twenty districts are projected to have enrollment gains over the ten-year period, including all seven districts in Queens and five of the six districts in the Bronx. The five largest gains, which are listed in order of magnitude, are projected in Districts 20, 25, 24, 31, and 15. Two of these districts (Districts 15 and 20) are located in Brooklyn while another two districts are located in Queens (Districts 24 and 25). The remaining district, District 31, is located in Staten Island.

Twelve districts are projected to have enrollment losses over the ten-year period, eight of which are located in Brooklyn. The five largest losses, which are listed in order of magnitude, are projected in Districts 6, 17, 18, 13, and 23. The losses projected in District 23 are almost identical to the ten-year losses projected in two other Brooklyn school districts, Districts 14 and 32. Four of the districts (Districts 13, 17, 18, and 23) with the largest projected losses are located in Brooklyn. District 6 in the Bronx is projected to lose more than 4,100 students over the ten-year period.

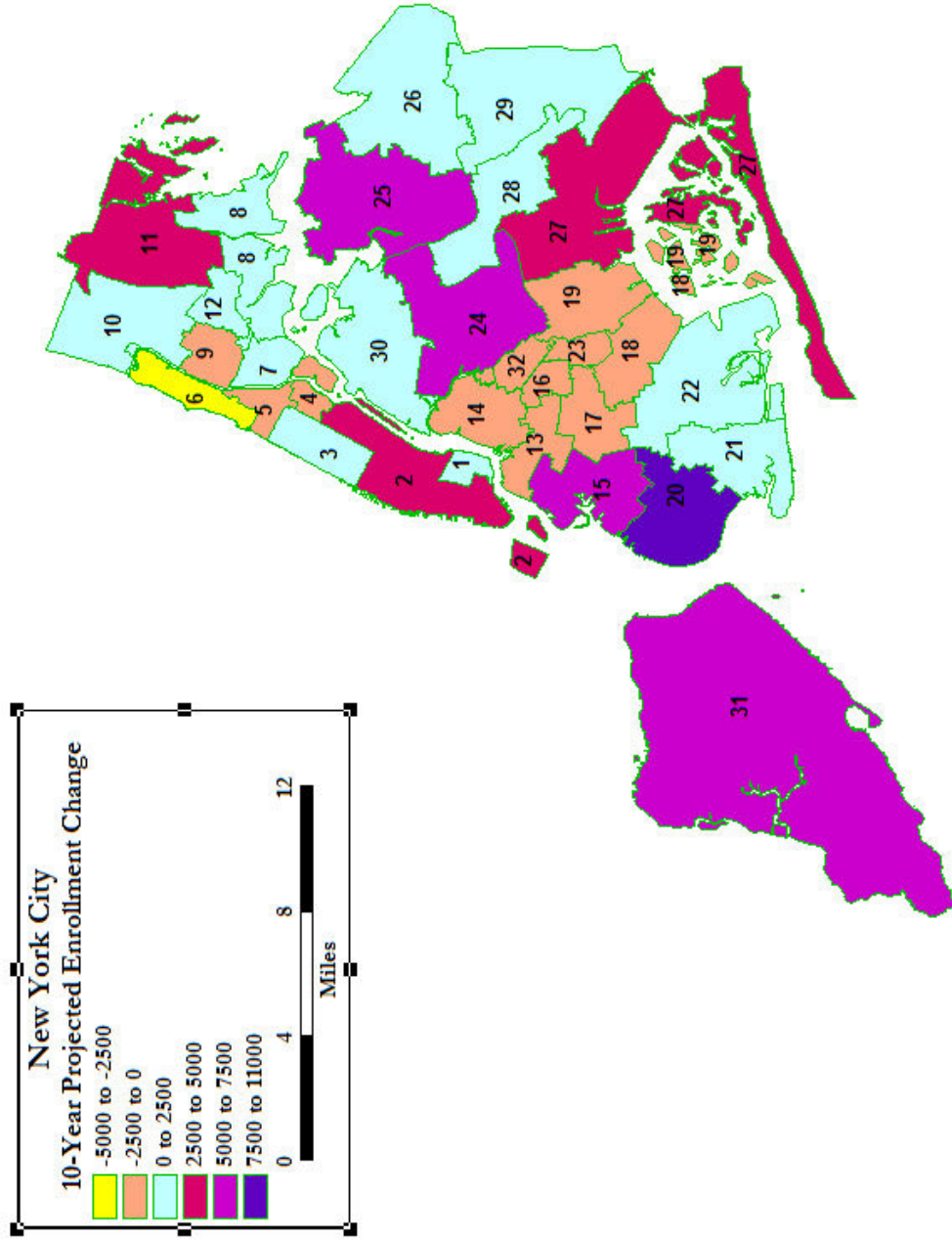
Table 15
Enrollment Projections by Community School District (PK-8)

Year	1	2	3	4	5	6	7	8	9	10	11	12	13	14	15	16
2008-09	9,486	23,066	13,798	11,333	10,530	21,618	13,630	22,003	27,754	39,500	29,610	17,705	11,047	14,035	21,892	8,288
PROJECTED																
2013-14	10,328	24,972	13,783	10,429	9,690	18,083	13,443	21,884	26,610	38,317	31,156	17,669	9,840	13,012	24,634	7,542
5-year change	+842	+1,906	-15	-904	-840	-3,535	-187	-119	-1,144	-1,183	+1,546	-36	-1,207	-1,023	+2,742	-746
2018-19	11,099	26,822	14,350	10,532	9,997	17,511	14,590	23,501	27,733	39,803	33,572	18,685	9,786	13,003	27,723	7,848
10-year change	+1,613	+3,756	+552	-801	-533	-4,107	+960	+1,498	-21	+303	+3,962	+980	-1,261	-1,032	+5,831	-440
PROJECTED																
Year	17	18	19	20	21	22	23	24	25	26	27	28	29	30	31	32
2008-09	19,471	14,845	20,610	30,840	21,903	27,068	10,760	39,292	22,884	16,648	34,738	23,601	24,865	29,684	42,820	13,684
PROJECTED																
2013-14	17,695	13,101	19,884	35,804	21,891	27,667	9,596	43,227	26,381	17,283	36,307	24,417	25,367	30,140	45,853	12,332
5-year change	-1,776	-1,744	-726	+4,964	-12	+599	-1,164	+3,935	+3,497	+635	+1,569	+816	+502	+456	+3,033	-1,352
2018-19	17,634	13,152	20,428	41,418	22,899	28,454	9,727	46,124	29,798	18,678	37,861	25,866	26,561	31,064	49,436	12,654
10-year change	-1,837	-1,693	-182	+10,578	+996	+1,386	-1,033	+6,832	+6,914	+2,030	+3,123	+2,265	+1,696	+1,380	+6,616	-1,030

Legend:

- Top five projected gains over 10-year period
- Top five projected losses over 10-year period

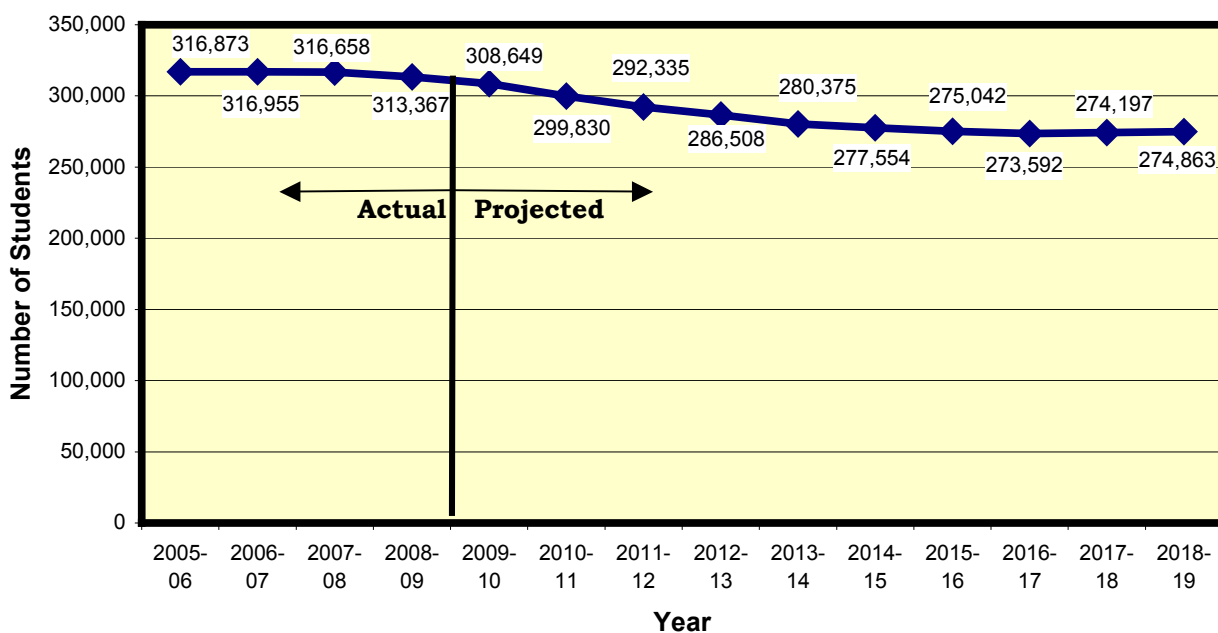
Figure 17
Projected Ten-Year Change in Enrollment by Community School District



High School Projections

Since New York City Public School students have school choice in the high school they attend, the high school projections were computed at the borough level since many students attend high school outside of their local community school district. Grade 9-12 projections were computed by race by using the aggregated 8th grade enrollments from the corresponding community school districts for each of the five boroughs and applying the Cohort-Survival Ratio method. Historical enrollment of District 79, the city's alternative high school district, were returned to their corresponding local community school districts before the projections were performed. District 79 students housed in off-site facilities not maintained by the New York City School Construction Authority were not included in this analysis. The following totals also include special education students in the high school grades. Grade-by-grade projections for each of the five boroughs are provided in the Appendix.

Figure 18
New York City High School Enrollment History and Projections
2005-2018



From 2005-06 through 2008-09, the number of high school students in New York City slowly declined, losing approximately 3,500 students during this time period as shown in Figure 18. It is expected that enrollment will continue to decline due to the advancement of the smaller elementary and middle school cohorts into the high school grades. Enrollment is projected to be 274,863 students in 2018-19, which would be a loss of 38,504 students from the 2008-09 total of 313,367. The greatest decline is projected within the first five years when a loss of nearly 33,000 students is forecasted.

Of the five boroughs, Brooklyn is projected to have the largest decline in the number of high school students, losing approximately 15,000 students over the ten-year period as shown in Table 16 and Figure 19. Brooklyn, which had the greatest number of high school students in the city with 90,633 students in 2008-09, has lost more than 5,000 high school students since 2005-06. Enrollment is projected to decline by approximately 11,000 students in the first five years of the projection period and an additional 4,000 students in the last five years of the projection period. It is projected that in 2017-18, Queens will surpass Brooklyn and have the largest high school enrollment of the five boroughs.

Figure 19
Historical and Projected High School Enrollment by Borough
2005-2018

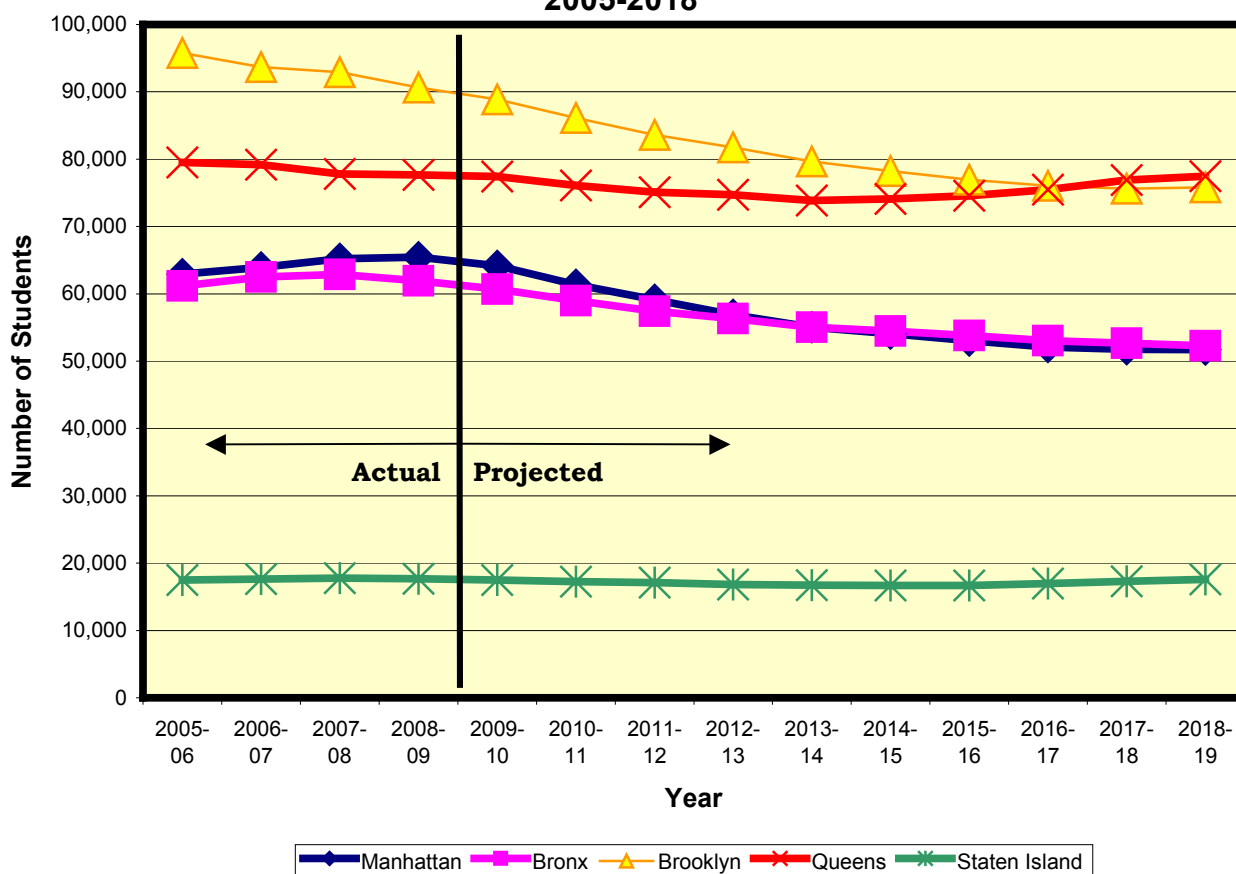


Table 16
High School Enrollment Projections

Year	New York City	Manhattan	Bronx	Brooklyn	Queens	Staten Island
HISTORICAL						
2005-06	316,873	62,910	61,152	95,769	79,532	17,510
2006-07	316,955	63,921	62,521	93,701	79,196	17,616
2007-08	316,658	65,226	62,902	92,918	77,827	17,785
2008-09	313,367	65,457	61,928	90,633	77,684	17,665
PROJECTED						
2009-10	308,649	64,148	60,697	88,882	77,446	17,476
2010-11	299,830	61,359	58,987	86,117	76,106	17,261
2011-12	292,335	59,144	57,422	83,588	75,093	17,088
2012-13	286,508	56,895	56,340	81,748	74,699	16,826
2013-14	280,375	55,044	55,060	79,659	73,869	16,743
5-Year Change	-32,992	-10,413	-6,868	-10,974	-3,815	-922
2014-15	277,554	54,091	54,487	78,224	74,089	16,663
2015-16	275,042	53,021	53,798	76,948	74,581	16,694
2016-17	273,592	52,076	53,034	76,033	75,495	16,954
2017-18	274,197	51,751	52,645	75,617	76,889	17,295
2018-19	274,863	51,692	52,284	75,823	77,486	17,578
5-Year Change	-5,512	-3,352	-2,776	-3,836	+3,617	+835
10-Year Change	-38,504	-13,765	-9,644	-14,810	-198	-87

Manhattan, which had the third largest high school enrollment in New York City with 65,457 students in 2008-09, is projected to have the second largest decline, losing 13,765 students over the ten-year period as shown in Table 16 and Figure 19. Unlike Brooklyn, Manhattan has experienced rising enrollment since the 2005-06 school year. High school enrollment in Manhattan is projected to steadily decline throughout the projection period. Enrollment is projected to decline by more than 10,400 students in the first five years and approximately 3,300 students in the last five years of the projection period.

The Bronx is projected to have the third largest decline in high school enrollment in the next ten years as shown in Table 16 and Figure 19. The Bronx, which had the fourth largest high school enrollment in New York City with 61,928 students in 2008-09, is projected to lose 9,644 students over the ten-year projection period. Since 2005-06, high school enrollment was rising before declining in 2008-09. Like Manhattan, enrollment in the Bronx is projected to steadily decline throughout the projection period. Enrollment is projected to decline by approximately 6,900 students in the first five years and an additional 2,800 students in the last five years of the projection period.

The borough of Queens had the second largest high school enrollment in 2008-09 with 77,684 students. Enrollment is projected to decline through 2013-14 before reversing trend. The borough is projected to lose 198 students over the next ten years as shown in Table 16 and Figure 19. Like Brooklyn, the high school population in Queens declined from 2005-06 through 2008-09, losing 1,848 students. Enrollment is projected to decline by approximately 3,800 students in the first five years before gaining more than 3,600 students in the last five years of the projection period.

Staten Island, which had the smallest high school enrollment of the five boroughs with 17,665 students in 2008-09, is projected to lose the fewest students, 87, over the next ten years as shown in Table 16 and Figure 19. Since 2005-06, Staten Island's high school enrollment has been fairly stable, ranging between 17,510 and 17,785. Enrollment is projected to decline through 2014-15 before reversing trend. Enrollment is projected to decline by 922 students in the first five years before gaining 835 students in the last five years of the projection period.

District 75

Enrollment projections were also performed for District 75, the special education district of the New York City Public Schools, for the ten-year period beginning with the 2009-10 school year and ending in 2018-19. District 75 projections were computed by analyzing the total special education enrollment trends by race at the borough level. For each ethnicity and borough, the percentage change and numerical change of the total number of special education students were computed for each year from 2003-04 through 2008-09. Average numerical and percentage changes were computed and, depending upon the size of the ethnic group and the historical trends, the average numerical change or percentage change was used to compute future special education enrollment. Greater detail on the methodology used can be found in the Appendix.

The forthcoming District 75 enrollment projections are based on historical trends. Enrollment in this type of district can be highly influenced by policy changes. For instance, if the district wished to limit the number of students in District 75 thereby increasing enrollment at the regional special education level, the accuracy of the projections would be affected by such a policy change.

While District 75 houses predominantly special education students, there are also general education students in grades K-12. As shown in Table 17, total enrollment in District 75 has been fairly stable in the last three years, ranging from 22,100 to 22,133. In 2008-09, total enrollment in District 75 was 22,108 students. Enrollment is projected to decline in 2009-10 before rising slowly for the rest of the projection period. Numerical gains/losses are also shown for the first five projection years and for the entire ten-year period. The total enrollment in District 75 is projected to be 22,431 in 2018-19, which would be a gain of 323 students from the 2008-09 enrollment.

Regarding Manhattan, the number of students in District 75 has sharply declined since 2004-05, losing 759 students over this time period. Manhattan had the second fewest number of District 75 students of the five boroughs in 2008-09. Enrollment in 2008-09 was 2,945 students as shown in Table 17 and Figure 20. Enrollment is projected to decline to 2,060 in 2018-19, which would be a loss of 885 students over the ten-year period.

The Bronx had the second largest number of District 75 students of the five boroughs in 2008-09. Other than a small decline in the 2005-06 year, enrollment has increased steadily since the 2003-04 school year as shown in Table 17 and Figure 20. District 75 enrollment in the Bronx as of October 2008 was 5,543 students, which is an increase of 515 students since 2003-04. Enrollment in the Bronx is projected to increase to 6,813 students by 2018-19, which would be a gain of 1,270 students. It is anticipated that the Bronx will have the largest number of District 75 students by 2013-14, surpassing Brooklyn.

In Brooklyn, the number of students enrolled in District 75 has been declining since 2004-05, losing 507 students during this time period. As shown in Table 17 and Figure 20, Brooklyn housed the greatest number of District 75 students of the five boroughs with 6,449 students in 2008-09. Enrollment is projected to decline to 5,479 in 2018-19, which would be a loss of 970 students from the 2008-09 enrollment. Due to the projected decline in enrollment, Brooklyn will house the third greatest number of District 75 students by the end of the projection period, being surpassed by both the Bronx and Queens.

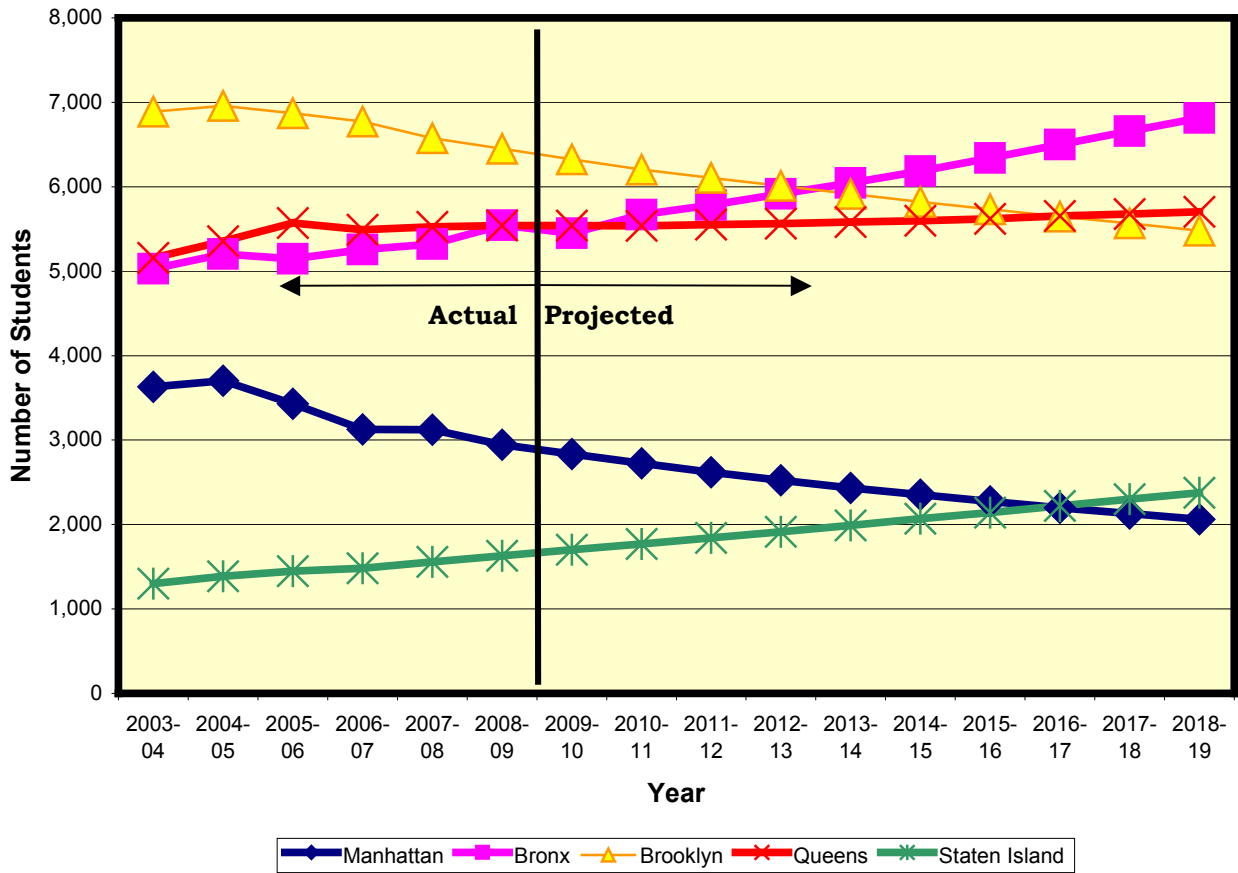
Queens, which had the 3rd largest number of District 75 students of the five boroughs in 2008-09, has experienced rising enrollment, in general, since the 2003-04 school year. As shown in Table 17 and Figure 20, District 75 enrollment in Queens as of October 2008 was 5,541 students. Enrollment is projected to be essentially stable through 2010-11 before slowly increasing for the remaining years of the projection period. Over the ten-year projection period, Queens is projected to gain 161 students. Due to declining enrollment in Brooklyn, it is

projected that Queens will have the 2nd largest number of District 75 students of the five boroughs by 2016-17.

Table 17
District 75 Enrollment Projections

Year	New York City	Manhattan	Bronx	Brooklyn	Queens	Staten Island
HISTORICAL						
2003-04	22,004	3,629	5,028	6,891	5,156	1,300
2004-05	22,603	3,704	5,203	6,956	5,354	1,386
2005-06	22,461	3,430	5,146	6,869	5,569	1,447
2006-07	22,133	3,127	5,257	6,773	5,493	1,483
2007-08	22,100	3,121	5,321	6,574	5,526	1,558
2008-09	22,108	2,945	5,543	6,449	5,541	1,630
PROJECTED						
2009-10	21,851	2,833	5,451	6,325	5,542	1,700
2010-11	21,899	2,723	5,668	6,203	5,537	1,768
2011-12	21,900	2,620	5,782	6,105	5,551	1,842
2012-13	21,926	2,524	5,916	6,009	5,564	1,913
2013-14	21,969	2,434	6,046	5,915	5,583	1,991
5-Year Change	-139	-511	+503	-534	+42	+361
2014-15	22,025	2,353	6,186	5,820	5,598	2,068
2015-16	22,111	2,275	6,342	5,732	5,621	2,141
2016-17	22,217	2,198	6,498	5,648	5,653	2,220
2017-18	22,331	2,129	6,659	5,566	5,678	2,299
2018-19	22,431	2,060	6,813	5,479	5,702	2,377
5-Year Change	+462	-374	+767	-436	+119	+386
10-Year Change	+323	-885	+1,270	-970	+161	+747

Figure 20
District 75 Enrollment History and Projections by Borough



Staten Island had the fewest number of District 75 students of the five boroughs in 2008-09. However, District 75 enrollment has been increasing steadily since the 2003-04 school year as shown in Table 17 and Figure 20. District 75 enrollment in 2008-09 was 1,630 students, which is a gain of 330 students since 2003-04. Enrollment in Staten Island is projected to increase to 2,377 students by 2018-19, which would be a gain of 747 students.

APPENDIX

**PROJECTED PK-12 ENROLLMENTS
FOR 2009-10 TO 2018-19
FOR NEW YORK CITY**

Table A1
New York City Public Schools Totals

Year	PK	K	1	2	3	4	5	6	7	8	9	10	11	12	GED	SE ¹	Total
HISTORICAL																	
2008-09	54038	62563	68010	65958	64413	62364	61771	61560	63107	65508	87501	82089	59782	53846	9034	102954	1,024,498
PROJECTED																	
2009-10	52879	62298	68827	65343	63239	62492	60713	59889	62162	62174	86676	78015	58095	55662	8477	107408	1,014,349
2010-11	54104	61435	68581	66183	62703	61371	60883	58857	60487	61247	82171	77355	55427	54060	8477	112215	1,005,556
2011-12	55619	62943	67592	65944	63556	60900	59824	58975	59472	59629	80839	73531	54964	51587	8477	116958	1,000,810
2012-13	55819	64751	69196	64983	63326	61758	59431	57956	59590	58668	78563	72337	52432	51156	8477	121753	1,000,196
2013-14	56016	64997	71119	66553	62404	61530	60298	57550	58559	58838	77042	70332	51587	48801	8477	126578	1,000,681
2014-15	56222	65237	71393	68440	63949	60635	60101	58443	58198	57824	77001	69114	50226	48004	8477	131451	1,004,715
2015-16	56357	65473	71660	68700	65823	62170	59225	58241	59101	57507	75781	69286	49456	46718	8477	136365	1,010,340
2016-17	56585	65648	71923	68954	66069	64019	60781	57376	58915	58443	75209	68076	49902	46007	8477	141325	1,017,709
2017-18	56809	65923	72117	69208	66313	64254	62636	58900	58030	58247	76191	67703	48868	46428	8477	146330	1,026,434
2018-19	57032	66194	72418	69395	66554	64492	62862	60625	59587	57375	76257	68752	48765	45446	8477	151372	1,035,603

Note: ¹Includes special education enrollment at the district level (PK-8), high school level (9-12), and D75.

**PROJECTED PK-12 ENROLLMENTS
FOR 2009-10 TO 2018-19
BY BOROUGH**

Table A2
Manhattan Totals

Year	PK	K	1	2	3	4	5	6	7	8	9	10	11	12	GED	SE¹	Total
2008-09	7101	8287	8649	8523	8423	8062	7911	7947	8233	8674	18384	16657	13295	11443	2202	14444	158,235
HISTORICAL																	
2009-10	6819	8381	8679	8275	8032	8076	7604	7608	7947	8147	17169	16238	12596	12298	2151	15168	155,188
2010-11	6864	8201	8768	8302	7806	7712	7620	7337	7616	7867	16109	15224	12302	11656	2151	15905	151,440
2011-12	6939	8288	8575	8392	7840	7500	7287	7368	7331	7552	15530	14357	11586	11386	2151	16652	148,734
2012-13	6947	8372	8661	8212	7930	7528	7104	7064	7366	7269	14814	13864	10983	10731	2151	17407	146,403
2013-14	6955	8382	8739	8296	7758	7618	7134	6871	7063	7302	14221	13270	10645	10186	2151	18172	144,763
2014-15	6970	8394	8750	8370	7843	7455	7222	6918	6875	7002	14264	12784	10228	9881	2151	18946	144,053
2015-16	6938	8407	8762	8381	7918	7544	7067	7002	6922	6821	13607	12869	9900	9498	2151	19728	143,515
2016-17	6917	8370	8775	8393	7927	7614	7154	6863	7004	6870	13224	12279	10009	9201	2151	20520	143,271
2017-18	6894	8343	8737	8405	7939	7623	7224	6957	6863	6953	13275	12010	9578	9313	2151	21322	143,587
2018-19	6869	8315	8709	8368	7951	7635	7233	7031	6956	6811	13444	12114	9427	8916	2151	22133	144,063

Note: ¹Includes special education enrollment at the district level (PK-8), high school level (9-12), and D75.

Table A3
Bronx Totals

Year	PK	1	2	3	4	5	6	7	8	9	10	11	12	GED	SE¹	Total	
HISTORICAL																	
2008-09	10084	13245	14941	14573	13953	13496	13347	13215	13414	13920	17345	15889	10956	9597	2572	27137	217,684
PROJECTED																	
2009-10	9915	13137	14934	14127	13669	13426	13066	12762	13418	13073	17387	14618	11073	9631	2357	27884	214,477
2010-11	10189	13062	14812	14132	13256	13153	13011	12496	12955	13075	16351	14652	10205	9740	2357	28952	212,398
2011-12	10415	13440	14725	14020	13265	12764	12756	12455	12684	12634	16315	13791	10231	8983	2357	29933	210,768
2012-13	10516	13709	15165	13937	13166	12778	12382	12217	12640	12373	15786	13742	9646	9006	2357	30942	210,362
2013-14	10614	13843	15457	14359	13084	12690	12395	11856	12389	12337	15456	13301	9589	8500	2357	31958	210,185
2014-15	10716	13976	15608	14644	13489	12607	12316	11865	12034	12097	15471	13020	9291	8434	2357	32995	210,920
2015-16	10757	14105	15757	14785	13760	13006	12234	11802	12041	11750	15156	13056	9092	8177	2357	34053	211,888
2016-17	10829	14162	15903	14925	13892	13271	12628	11723	11981	11763	14734	12781	9150	8000	2357	35130	213,229
2017-18	10900	14261	15966	15066	14024	13395	12888	12108	11899	11705	14777	12431	8947	8069	2357	36224	215,017
2018-19	10972	14354	16078	15125	14157	13524	13007	12359	12290	11622	14741	12469	8709	7886	2357	37331	216,981

Note: ¹Includes special education enrollment at the district level (PK-8), high school level (9-12), and D75.

Table A4
Brooklyn Totals

Year	PK	K	1	2	3	4	5	6	7	8	9	10	11	12	GED	SE¹	Total
2008-09	18526	18524	21036	20386	19726	19500	19196	19249	19826	20661	25272	24990	15842	15790	2371	30630	311,525
HISTORICAL																	
2009-10	18369	18661	21116	19992	19458	19054	18794	18561	19454	19361	25332	23452	15348	16022	2181	31729	306,884
2010-11	18829	18406	21272	20092	19088	18804	18371	18166	18754	18993	23732	23517	14446	15512	2181	32842	303,005
2011-12	19443	18947	20932	20242	19195	18460	18146	17668	18375	18314	23309	22109	14485	14603	2181	33965	300,374
2012-13	19504	19628	21496	19928	19341	18573	17827	17434	17880	17966	22462	21726	13655	14640	2181	35100	299,341
2013-14	19565	19691	22226	20476	19056	18714	17940	17125	17638	17503	22055	20935	13428	13794	2181	36245	298,572
2014-15	19624	19756	22297	21196	19593	18448	18101	17268	17327	17270	21489	20603	12935	13566	2181	37405	299,059
2015-16	19641	19813	22372	21262	20319	18970	17856	17397	17483	16979	21190	20127	12745	13066	2181	38575	299,976
2016-17	19690	19833	22437	21333	20382	19697	18388	17128	17604	17144	20812	19865	12476	12869	2181	39757	301,596
2017-18	19738	19880	22463	21396	20452	19758	19119	17643	17342	17261	20965	19531	12318	12593	2181	40954	303,594
2018-19	19784	19930	22512	21421	20511	19826	19176	18238	17864	17019	21138	19719	12115	12431	2181	42163	306,028

Note: ¹Includes special education enrollment at the district level (PK-8), high school level (9-12), and D75.

Table A5
Queens Totals

Year	PK	K	1	2	3	4	5	6	7	8	9	10	11	12	GED	SE ¹	Total
2008-09	14985	18294	19179	18499	18395	17442	17521	17454	17779	18379	21893	20214	15929	13738	1486	23752	274,939
HISTORICAL																	
2009-10	14580	18001	19734	18790	18158	18101	17369	17333	17586	17755	22256	19288	15498	14371	1432	25196	275,448
2010-11	14893	17815	19455	19343	18452	17863	18029	17154	17471	17570	21457	19626	14824	13975	1432	26644	276,003
2011-12	15476	18141	19257	19063	19004	18160	17777	17804	17312	17452	21266	18952	15098	13376	1432	28094	277,664
2012-13	15481	18888	19588	18848	18717	18719	18080	17552	17955	17304	21112	18779	14609	13623	1432	29546	280,233
2013-14	15488	18897	20379	19182	18500	18425	18647	17837	17707	17959	20833	18641	14460	13188	1432	30999	282,574
2014-15	15496	18899	20390	19958	18837	18206	18352	18394	18024	17705	21318	18437	14360	13054	1432	32453	285,315
2015-16	15576	18907	20392	19970	19607	18551	18121	18107	18582	18029	21308	18978	14241	12963	1432	33908	288,672
2016-17	15673	19007	20401	19972	19619	19308	18480	17882	18310	18604	21733	18850	14791	12864	1432	35366	292,292
2017-18	15768	19124	20508	19981	19621	19320	19244	18234	18064	18321	22307	19241	14534	13377	1432	36825	295,901
2018-19	15866	19240	20635	20085	19629	19322	19256	19011	18430	18069	22084	19816	14848	13131	1432	38286	299,140

Note: ¹Includes special education enrollment at the district level (PK-8), high school level (9-12), and D75.

Table A6
Staten Island Totals

Year	PK	K	1	2	3	4	5	6	7	8	9	10	11	12	GED	SE¹	Total
HISTORICAL																	
2008-09	3342	4213	4205	3977	3916	3864	3796	3695	3855	3874	4607	4339	3760	3278	403	6991	62,115
PROJECTED																	
2009-10	3196	4118	4364	4159	3922	3835	3880	3625	3757	3838	4532	4419	3580	3340	356	7431	62,352
2010-11	3329	3951	4274	4314	4101	3839	3852	3704	3691	3742	4522	4336	3650	3177	356	7872	62,710
2011-12	3346	4127	4103	4227	4252	4016	3858	3680	3770	3677	4419	4322	3564	3239	356	8314	63,270
2012-13	3371	4154	4286	4058	4172	4160	4038	3689	3749	3756	4389	4226	3539	3156	356	8758	63,857
2013-14	3394	4184	4318	4240	4006	4083	4182	3861	3762	3737	4477	4185	3465	3133	356	9204	64,587
2014-15	3416	4212	4348	4272	4187	3919	4110	3998	3938	3750	4459	4270	3412	3069	356	9652	65,368
2015-16	3445	4241	4377	4302	4219	4099	3947	3933	4073	3928	4520	4256	3478	3014	356	10101	66,289
2016-17	3476	4276	4407	4331	4249	4129	4131	3780	4016	4062	4706	4301	3476	3073	356	10552	67,321
2017-18	3509	4315	4443	4360	4277	4158	4161	3958	3862	4007	4867	4490	3491	3076	356	11005	68,335
2018-19	3541	4355	4484	4396	4306	4185	4190	3986	4047	3854	4850	4634	3666	3082	356	11459	69,391

Note: ¹Includes special education enrollment at the district level (PK-8), high school level (9-12), and D75.

**PROJECTED PK-8 ENROLLMENTS
FOR 2009-10 TO 2018-19
BY COMMUNITY SCHOOL DISTRICT**

Table A7
Community School District #1

Year	PK	K	1	2	3	4	5	6	7	8	SE¹	Total
2008-09	1163	856	870	879	829	793	736	807	743	781	1029	9,486
HISTORICAL												
2009-10	1084	836	912	834	854	812	753	754	811	748	1127	9,525
2010-11	1129	815	893	875	813	838	773	772	758	816	1225	9,707
2011-12	1193	863	869	856	854	797	801	804	775	763	1323	9,898
2012-13	1194	893	919	835	836	835	761	841	808	779	1421	10,122
2013-14	1195	894	954	882	816	816	798	798	845	811	1519	10,328
2014-15	1197	895	955	916	861	798	778	844	802	848	1617	10,511
2015-16	1193	897	956	917	896	843	761	817	850	804	1715	10,649
2016-17	1189	893	958	918	897	875	804	802	823	851	1813	10,823
2017-18	1186	890	954	920	898	876	834	846	807	825	1911	10,947
2018-19	1182	889	951	916	900	877	835	881	851	808	2009	11,099

Note: ¹Includes special education enrollment at the elementary and JH/IS levels only.

Table A8
Community School District #2

Year	PK	K	1	2	3	4	5	6	7	8	SE¹	Total
HISTORICAL												
2008-09	1345	2489	2410	2228	2263	2149	2104	1958	2039	2172	1909	23,066
PROJECTED												
2009-10	1393	2590	2453	2321	2133	2218	2091	2006	1953	2083	2084	23,325
2010-11	1411	2590	2554	2363	2222	2088	2158	1989	2002	1994	2259	23,630
2011-12	1442	2637	2554	2461	2263	2174	2030	2050	1986	2043	2434	24,074
2012-13	1444	2719	2600	2461	2357	2214	2115	1930	2047	2026	2609	24,522
2013-14	1445	2724	2677	2506	2357	2306	2152	2006	1927	2088	2784	24,972
2014-15	1448	2729	2682	2581	2399	2305	2241	2029	2003	1965	2959	25,341
2015-16	1442	2732	2687	2586	2472	2349	2241	2113	2028	2042	3134	25,826
2016-17	1438	2719	2690	2591	2476	2417	2284	2116	2113	2067	3309	26,220
2017-18	1432	2710	2677	2594	2481	2421	2351	2154	2115	2154	3484	26,573
2018-19	1427	2701	2668	2581	2484	2426	2355	2211	2154	2156	3659	26,822

Note: ¹Includes special education enrollment at the elementary and JH/IS levels only.

Table A9
Community School District #3

Year	PK	K	1	2	3	4	5	6	7	8	SE¹	Total
HISTORICAL												
2008-09	1101	1293	1382	1380	1320	1319	1238	1201	1212	1254	1098	13,798
PROJECTED												
2009-10	1099	1378	1327	1326	1321	1273	1258	1162	1160	1202	1204	13,710
2010-11	1106	1332	1415	1271	1270	1274	1214	1183	1121	1151	1310	13,647
2011-12	1115	1349	1367	1359	1220	1225	1218	1140	1141	1113	1416	13,663
2012-13	1117	1359	1383	1313	1304	1176	1174	1145	1099	1132	1522	13,724
2013-14	1118	1360	1395	1330	1260	1259	1131	1107	1105	1090	1628	13,783
2014-15	1120	1362	1396	1340	1278	1218	1211	1070	1067	1098	1734	13,894
2015-16	1115	1363	1398	1341	1286	1235	1170	1148	1031	1058	1840	13,985
2016-17	1112	1359	1399	1343	1287	1243	1187	1111	1105	1023	1946	14,115
2017-18	1108	1354	1395	1344	1289	1244	1195	1127	1070	1096	2052	14,274
2018-19	1105	1347	1390	1340	1290	1246	1196	1134	1084	1060	2158	14,350

Note: ¹Includes special education enrollment at the elementary and JH/IS levels only.

Table A10
Community School District #4

Year	PK	K	1	2	3	4	5	6	7	8	SE¹	Total
HISTORICAL												
2008-09	860	928	1056	1054	994	980	979	947	1047	1064	1424	11,333
PROJECTED												
2009-10	758	937	979	1019	994	943	916	916	975	996	1513	10,946
2010-11	789	882	987	946	966	945	881	861	946	929	1602	10,734
2011-12	759	917	933	953	899	921	881	837	888	905	1691	10,584
2012-13	760	879	972	901	908	858	864	845	865	848	1780	10,480
2013-14	760	879	932	938	857	867	804	824	872	827	1869	10,429
2014-15	764	880	932	899	893	818	813	776	855	832	1958	10,420
2015-16	759	883	933	899	858	852	766	786	805	821	2047	10,409
2016-17	757	879	936	900	858	820	795	744	816	775	2136	10,416
2017-18	755	876	932	903	859	820	765	781	773	787	2225	10,476
2018-19	752	873	929	899	862	821	765	761	811	745	2314	10,532

Note: ¹Includes special education enrollment at the elementary and JH/IS levels only.

Table A11
Community School District #5

Year	PK	K	1	2	3	4	5	6	7	8	SE¹	Total
2008-09	1232	800	874	920	946	845	704	1020	1075	985	1129	10,530
HISTORICAL												
2009-10	1163	821	937	836	830	859	737	784	1004	1014	1201	10,186
2010-11	1143	815	960	896	754	755	749	822	772	947	1273	9,886
2011-12	1151	801	952	918	809	685	662	837	808	727	1345	9,695
2012-13	1152	808	936	911	829	736	599	742	823	762	1417	9,715
2013-14	1155	809	942	895	823	754	647	672	729	775	1489	9,690
2014-15	1157	810	944	901	809	749	664	730	660	688	1561	9,673
2015-16	1151	811	945	903	815	737	659	748	716	622	1633	9,740
2016-17	1146	808	946	904	817	743	650	741	734	676	1705	9,870
2017-18	1143	805	942	905	818	745	656	734	727	693	1777	9,945
2018-19	1138	803	939	901	819	746	658	738	720	686	1849	9,997

Note: ¹Includes special education enrollment at the elementary and JH/IS levels only.

Table A12
Community School District #6

Year	PK	K	1	2	3	4	5	6	7	8	SE¹	Total
HISTORICAL												
2008-09	1400	1918	2056	2058	2063	1968	2143	2010	2106	2404	1492	21,618
PROJECTED												
2009-10	1322	1817	2070	1936	1893	1960	1841	1982	2035	2089	1570	20,515
2010-11	1286	1765	1958	1949	1776	1801	1835	1706	2007	2019	1652	19,754
2011-12	1279	1719	1899	1843	1790	1690	1687	1695	1726	1989	1739	19,056
2012-13	1280	1712	1850	1789	1691	1703	1583	1555	1716	1712	1830	18,421
2013-14	1282	1714	1838	1743	1640	1610	1595	1460	1576	1699	1926	18,083
2014-15	1284	1716	1840	1731	1598	1561	1509	1466	1479	1559	2027	17,770
2015-16	1278	1719	1842	1733	1586	1522	1464	1387	1484	1462	2133	17,610
2016-17	1275	1710	1845	1735	1587	1510	1428	1346	1405	1467	2245	17,553
2017-18	1270	1706	1836	1737	1589	1511	1417	1312	1363	1388	2363	17,492
2018-19	1265	1700	1831	1729	1591	1513	1418	1303	1328	1346	2487	17,511

Note: ¹Includes special education enrollment at the elementary and JH/IS levels only.

Table A13
Community School District #7

Year	PK	K	1	2	3	4	5	6	7	8	SE¹	Total
HISTORICAL												
2008-09	1157	1120	1275	1290	1179	1136	1110	1210	1235	1336	1582	13,630
PROJECTED												
2009-10	1186	1122	1311	1201	1170	1109	1065	1094	1232	1180	1665	13,335
2010-11	1180	1166	1309	1234	1089	1101	1040	1049	1114	1177	1748	13,207
2011-12	1260	1162	1362	1233	1118	1025	1034	1025	1068	1066	1831	13,184
2012-13	1272	1239	1362	1282	1118	1052	962	1019	1045	1022	1914	13,287
2013-14	1284	1250	1445	1282	1161	1053	986	948	1038	999	1997	13,443
2014-15	1297	1264	1458	1361	1161	1092	988	972	966	994	2080	13,633
2015-16	1302	1275	1474	1372	1233	1093	1024	974	990	924	2163	13,824
2016-17	1312	1281	1487	1388	1244	1161	1025	1009	992	947	2246	14,092
2017-18	1320	1289	1495	1400	1259	1171	1090	1010	1028	950	2329	14,341
2018-19	1329	1298	1503	1408	1269	1186	1099	1074	1029	983	2412	14,590

Note: ¹Includes special education enrollment at the elementary and JH/IS levels only.

Table A14
Community School District #8

Year	PK	K	1	2	3	4	5	6	7	8	SE¹	Total
2008-09	1626	1815	2066	2034	2037	1971	1926	1935	1923	1978	2692	22,003
HISTORICAL												
2009-10	1585	1789	2079	1953	1935	1992	1902	1838	1952	1870	2810	21,705
2010-11	1665	1758	2048	1970	1858	1892	1927	1817	1854	1899	2933	21,621
2011-12	1714	1844	2016	1943	1874	1818	1830	1847	1831	1805	3062	21,584
2012-13	1729	1903	2119	1915	1850	1835	1760	1754	1861	1784	3196	21,706
2013-14	1747	1921	2178	2011	1826	1814	1779	1689	1766	1817	3336	21,884
2014-15	1764	1940	2198	2070	1916	1793	1762	1711	1700	1725	3482	22,061
2015-16	1771	1959	2220	2089	1973	1881	1744	1699	1723	1660	3635	22,354
2016-17	1782	1967	2242	2109	1990	1938	1828	1684	1710	1685	3795	22,730
2017-18	1794	1980	2250	2131	2010	1954	1886	1764	1695	1673	3962	23,099
2018-19	1805	1992	2266	2138	2031	1974	1901	1823	1776	1659	4136	23,501

Note: ¹Includes special education enrollment at the elementary and JH/IS levels only.

Table A15
Community School District #9

Year	PK	K	1	2	3	4	5	6	7	8	SE¹	Total
2008-09	1676	2593	2966	2798	2630	2558	2374	2359	2528	2573	2699	27,754
HISTORICAL												
2009-10	1598	2589	2951	2730	2495	2484	2382	2217	2487	2441	2845	27,219
2010-11	1630	2537	2947	2719	2433	2358	2312	2222	2337	2401	2991	26,887
2011-12	1650	2592	2890	2715	2428	2298	2194	2160	2342	2257	3137	26,663
2012-13	1666	2617	2950	2661	2422	2296	2138	2052	2277	2261	3283	26,623
2013-14	1681	2642	2980	2717	2373	2290	2138	1998	2163	2199	3429	26,610
2014-15	1697	2668	3008	2745	2424	2243	2132	2000	2107	2090	3575	26,689
2015-16	1704	2692	3038	2770	2450	2291	2087	1993	2107	2036	3721	26,889
2016-17	1716	2703	3065	2798	2473	2317	2133	1952	2100	2036	3867	27,160
2017-18	1726	2723	3077	2823	2498	2338	2157	1993	2058	2029	4013	27,435
2018-19	1738	2739	3100	2834	2521	2362	2176	2016	2100	1988	4159	27,733

Note: ¹Includes special education enrollment at the elementary and JH/IS levels only.

Table A16
Community School District #10

Year	PK	K	1	2	3	4	5	6	7	8	SE¹	Total
HISTORICAL												
2008-09	2554	3641	3955	3892	3630	3503	3494	3585	3463	3785	3998	39,500
PROJECTED												
2009-10	2526	3556	3859	3707	3601	3500	3433	3484	3485	3372	4205	38,728
2010-11	2548	3594	3774	3620	3432	3471	3429	3424	3387	3392	4412	38,483
2011-12	2586	3633	3812	3539	3351	3311	3403	3413	3329	3297	4619	38,293
2012-13	2612	3686	3854	3575	3276	3237	3247	3389	3318	3242	4826	38,262
2013-14	2635	3723	3909	3615	3309	3161	3174	3232	3294	3232	5033	38,317
2014-15	2661	3756	3948	3668	3346	3195	3100	3152	3142	3208	5240	38,416
2015-16	2670	3793	3983	3706	3397	3230	3133	3083	3064	3060	5447	38,566
2016-17	2688	3807	4023	3737	3430	3281	3169	3113	2997	2987	5654	38,886
2017-18	2707	3834	4037	3775	3459	3312	3218	3152	3027	2921	5861	39,303
2018-19	2724	3860	4066	3788	3494	3341	3249	3200	3064	2949	6068	39,803

Note: ¹Includes special education enrollment at the elementary and JH/IS levels only.

Table A17
Community School District #11

Year	PK	K	1	2	3	4	5	6	7	8	SE¹	Total
HISTORICAL												
2008-09	1776	2487	2898	2863	2851	2761	2839	2664	2779	2703	2989	29,610
PROJECTED												
2009-10	1801	2555	2894	2845	2846	2824	2763	2662	2761	2792	3114	29,857
2010-11	1907	2490	2969	2841	2829	2820	2828	2592	2758	2773	3244	30,051
2011-12	1933	2645	2891	2915	2825	2804	2824	2661	2687	2770	3379	30,334
2012-13	1952	2683	3071	2838	2903	2800	2809	2659	2756	2699	3520	30,690
2013-14	1970	2709	3116	3016	2825	2880	2805	2649	2753	2766	3667	31,156
2014-15	1989	2736	3147	3061	3003	2800	2886	2646	2744	2765	3820	31,597
2015-16	1996	2761	3177	3091	3047	2980	2805	2726	2740	2755	3979	32,057
2016-17	2009	2771	3206	3121	3078	3024	2987	2647	2821	2751	4145	32,560
2017-18	2023	2790	3218	3150	3107	3055	3032	2828	2740	2830	4318	33,091
2018-19	2035	2809	3240	3162	3136	3083	3063	2870	2926	2750	4498	33,572

Note: ¹Includes special education enrollment at the elementary and JH/IS levels only.

Table A18
Community School District #12

Year	PK	K	1	2	3	4	5	6	7	8	SE¹	Total
HISTORICAL												
2008-09	1295	1587	1779	1692	1619	1566	1597	1457	1470	1536	2107	17,705
PROJECTED												
2009-10	1219	1524	1838	1688	1614	1516	1514	1462	1489	1409	2212	17,485
2010-11	1259	1515	1763	1746	1609	1510	1466	1387	1494	1428	2317	17,494
2011-12	1272	1562	1752	1673	1664	1507	1461	1343	1417	1433	2422	17,506
2012-13	1285	1579	1807	1664	1592	1557	1458	1337	1372	1360	2527	17,538
2013-14	1297	1596	1827	1716	1585	1491	1508	1335	1364	1318	2632	17,669
2014-15	1308	1610	1847	1737	1634	1483	1443	1380	1364	1308	2737	17,851
2015-16	1314	1623	1863	1755	1655	1530	1436	1323	1408	1309	2842	18,058
2016-17	1322	1631	1878	1770	1672	1549	1481	1314	1352	1353	2947	18,269
2017-18	1330	1643	1887	1785	1686	1564	1500	1357	1342	1298	3052	18,444
2018-19	1341	1654	1901	1793	1701	1577	1514	1372	1386	1289	3157	18,685

Note: ¹Includes special education enrollment at the elementary and JH/IS levels only.

Table A19
Community School District #13

Year	PK	K	1	2	3	4	5	6	7	8	SE¹	Total
HISTORICAL												
2008-09	862	891	1092	1068	1028	1032	931	1053	992	1172	926	11,047
PROJECTED												
2009-10	816	904	1065	1032	998	962	938	924	1073	934	946	10,592
2010-11	829	853	1079	1009	965	935	876	922	943	1012	967	10,390
2011-12	818	870	1017	1024	946	905	855	863	942	888	988	10,116
2012-13	821	861	1032	964	962	889	829	839	881	888	1010	9,976
2013-14	823	863	1017	980	904	906	815	813	856	831	1032	9,840
2014-15	825	867	1019	968	921	851	833	804	830	808	1055	9,781
2015-16	826	869	1024	970	912	868	783	819	820	785	1078	9,754
2016-17	828	870	1027	975	914	862	801	768	837	776	1102	9,760
2017-18	829	873	1028	978	919	864	798	787	784	792	1126	9,778
2018-19	832	874	1031	979	922	869	799	783	804	742	1151	9,786

Note: ¹Includes special education enrollment at the elementary and JH/IS levels only.

Table A20
Community School District #14

Year	PK	K	1	2	3	4	5	6	7	8	SE¹	Total
HISTORICAL												
2008-09	1524	1161	1288	1279	1243	1230	1205	1265	1314	1372	1154	14,035
PROJECTED												
2009-10	1436	1134	1373	1200	1219	1182	1164	1206	1298	1262	1213	13,687
2010-11	1493	1003	1344	1280	1141	1158	1117	1164	1237	1246	1272	13,455
2011-12	1572	1035	1177	1252	1217	1085	1098	1112	1196	1187	1331	13,262
2012-13	1578	1077	1214	1095	1191	1159	1025	1094	1139	1151	1390	13,113
2013-14	1583	1081	1258	1130	1043	1133	1095	1023	1123	1094	1449	13,012
2014-15	1587	1085	1264	1170	1076	991	1071	1088	1049	1080	1508	12,969
2015-16	1589	1089	1268	1175	1116	1023	937	1066	1115	1008	1567	12,953
2016-17	1592	1090	1273	1179	1121	1060	966	932	1092	1072	1626	13,003
2017-18	1596	1092	1274	1184	1125	1065	1005	959	955	1049	1685	12,989
2018-19	1599	1094	1276	1185	1129	1069	1009	998	982	918	1744	13,003

Note: ¹Includes special education enrollment at the elementary and JH/IS levels only.

Table A21
Community School District #15

Year	PK	K	1	2	3	4	5	6	7	8	SE ¹	Total
HISTORICAL												
2008-09	2090	2361	2426	2233	2111	1983	1969	1500	1471	1498	2250	21,892
PROJECTED												
2009-10	2060	2517	2438	2269	2086	2019	1919	1488	1447	1413	2468	22,124
2010-11	2192	2457	2599	2282	2120	1995	1957	1437	1435	1391	2686	22,551
2011-12	2353	2634	2534	2435	2134	2028	1935	1455	1387	1379	2904	23,178
2012-13	2360	2865	2711	2377	2278	2040	1966	1427	1405	1333	3122	23,884
2013-14	2367	2874	2949	2542	2227	2180	1978	1449	1378	1350	3340	24,634
2014-15	2374	2883	2958	2773	2381	2131	2119	1439	1399	1324	3558	25,339
2015-16	2376	2891	2967	2781	2606	2277	2073	1527	1389	1345	3776	26,008
2016-17	2382	2893	2976	2789	2613	2498	2217	1485	1476	1335	3994	26,658
2017-18	2388	2901	2979	2798	2621	2504	2439	1575	1435	1419	4212	27,271
2018-19	2394	2908	2987	2801	2629	2511	2445	1715	1523	1380	4430	27,723

Note: ¹Includes special education enrollment at the elementary and JH/IS levels only.

Table A22
Community School District #16

Year	PK	K	1	2	3	4	5	6	7	8	SE¹	Total
HISTORICAL												
2008-09	1065	618	790	822	745	779	721	539	669	698	842	8,288
PROJECTED												
2009-10	1010	631	760	732	762	712	674	598	535	617	880	7,911
2010-11	981	649	775	705	678	729	617	560	593	493	920	7,700
2011-12	993	636	795	719	655	648	632	514	555	546	962	7,655
2012-13	996	649	777	739	667	627	560	526	509	512	1006	7,568
2013-14	999	652	792	723	686	638	543	465	521	471	1052	7,542
2014-15	1002	654	795	737	672	657	552	453	461	482	1100	7,565
2015-16	1002	655	797	740	686	644	570	461	448	425	1150	7,578
2016-17	1005	655	799	742	689	658	560	477	456	415	1202	7,658
2017-18	1009	657	799	744	691	661	574	471	472	421	1257	7,756
2018-19	1012	660	801	744	692	662	577	484	466	436	1314	7,848

Note: ¹Includes special education enrollment at the elementary and JH/IS levels only.

Table A23
Community School District #17

Year	PK	K	1	2	3	4	5	6	7	8	SE¹	Total
HISTORICAL												
2008-09	1533	1444	1953	1852	1758	1735	1666	1818	1872	2023	1817	19,471
PROJECTED												
2009-10	1577	1387	1955	1818	1696	1656	1602	1698	1874	1786	1878	18,927
2010-11	1541	1372	1882	1818	1665	1596	1527	1633	1750	1787	1941	18,512
2011-12	1651	1286	1856	1752	1664	1569	1471	1555	1683	1670	2006	18,163
2012-13	1656	1355	1741	1725	1604	1566	1448	1497	1602	1607	2073	17,874
2013-14	1663	1359	1826	1619	1579	1513	1445	1475	1543	1531	2142	17,695
2014-15	1668	1362	1831	1698	1484	1487	1396	1470	1520	1474	2214	17,604
2015-16	1668	1366	1835	1703	1555	1398	1371	1421	1514	1454	2288	17,573
2016-17	1672	1368	1841	1706	1560	1463	1291	1395	1464	1448	2364	17,572
2017-18	1677	1371	1844	1711	1563	1468	1350	1313	1437	1401	2443	17,578
2018-19	1680	1376	1848	1714	1567	1471	1354	1372	1352	1375	2525	17,634

Note: ¹Includes special education enrollment at the elementary and JH/IS levels only.

Table A24
Community School District #18

Year	PK	K	1	2	3	4	5	6	7	8	SE¹	Total
HISTORICAL												
2008-09	712	1218	1544	1573	1619	1592	1571	1187	1328	1358	1143	14,845
PROJECTED												
2009-10	687	1161	1474	1475	1522	1598	1507	1119	1232	1320	1200	14,295
2010-11	693	1145	1406	1409	1426	1503	1513	1072	1162	1224	1257	13,810
2011-12	714	1160	1387	1344	1363	1407	1423	1077	1113	1154	1314	13,456
2012-13	717	1200	1408	1326	1301	1346	1331	1014	1119	1106	1371	13,239
2013-14	719	1205	1456	1345	1283	1284	1274	944	1052	1111	1428	13,101
2014-15	721	1208	1462	1391	1300	1265	1215	906	981	1045	1485	12,979
2015-16	723	1212	1466	1397	1345	1283	1197	862	940	974	1542	12,941
2016-17	724	1212	1471	1401	1351	1327	1214	849	894	933	1599	12,975
2017-18	726	1216	1471	1406	1355	1333	1255	857	882	888	1656	13,045
2018-19	728	1219	1476	1406	1360	1336	1261	888	890	875	1713	13,152

Note: ¹Includes special education enrollment at the elementary and JH/IS levels only.

Table A25
Community School District #19

Year	PK	K	1	2	3	4	5	6	7	8	SE¹	Total
HISTORICAL												
2008-09	1632	1702	2229	2158	2016	2020	1983	1753	1733	1833	1551	20,610
PROJECTED												
2009-10	1550	1778	2066	2099	2090	1931	1955	1711	1734	1698	1572	20,184
2010-11	1598	1740	2165	1944	2032	2004	1871	1680	1691	1698	1594	20,017
2011-12	1656	1790	2122	2038	1882	1948	1939	1611	1662	1655	1616	19,919
2012-13	1661	1848	2184	1996	1972	1804	1886	1664	1594	1630	1638	19,877
2013-14	1666	1854	2254	2055	1931	1889	1746	1621	1647	1560	1661	19,884
2014-15	1672	1860	2262	2122	1988	1849	1829	1498	1604	1616	1684	19,984
2015-16	1673	1867	2269	2129	2053	1904	1791	1573	1483	1572	1707	20,021
2016-17	1677	1869	2276	2136	2060	1966	1844	1538	1556	1454	1730	20,106
2017-18	1681	1872	2280	2143	2067	1973	1905	1586	1522	1523	1754	20,306
2018-19	1683	1877	2283	2146	2074	1980	1912	1636	1569	1490	1778	20,428

Note: ¹Includes special education enrollment at the elementary and JH/IS levels only.

Table A26
Community School District #20

Year	PK	K	1	2	3	4	5	6	7	8	SE¹	Total
HISTORICAL												
2008-09	2828	2995	2955	2808	2827	2733	2693	2767	3041	3174	2019	30,840
PROJECTED												
2009-10	2994	3075	3116	2924	2791	2797	2741	2795	2842	3081	2178	31,334
2010-11	3136	3212	3204	3086	2910	2762	2806	2862	2871	2880	2337	32,066
2011-12	3341	3415	3349	3174	3072	2881	2770	2941	2944	2909	2496	33,292
2012-13	3351	3671	3565	3320	3161	3043	2891	2897	3028	2984	2655	34,566
2013-14	3361	3683	3838	3537	3312	3133	3054	3022	2980	3070	2814	35,804
2014-15	3371	3695	3850	3812	3529	3287	3147	3194	3111	3021	2973	36,990
2015-16	3374	3706	3864	3824	3817	3503	3305	3294	3291	3156	3132	38,266
2016-17	3383	3709	3875	3837	3828	3798	3524	3458	3395	3339	3291	39,437
2017-18	3392	3718	3878	3848	3841	3809	3828	3695	3570	3446	3450	40,475
2018-19	3400	3727	3887	3851	3852	3822	3839	3984	3817	3630	3609	41,418

Note: ¹Includes special education enrollment at the elementary and JH/IS levels only.

Table A27
Community School District #21

Year	PK	K	1	2	3	4	5	6	7	8	SE¹	Total
HISTORICAL												
2008-09	1925	1755	1747	1710	1681	1748	1718	2577	2624	2643	1775	21,903
PROJECTED												
2009-10	1870	1699	1837	1691	1681	1666	1713	2498	2626	2610	1925	21,816
2010-11	1924	1681	1779	1783	1660	1667	1634	2456	2543	2613	2075	21,815
2011-12	1904	1746	1763	1726	1750	1647	1636	2337	2506	2526	2225	21,766
2012-13	1909	1732	1828	1707	1695	1738	1616	2335	2385	2494	2375	21,814
2013-14	1916	1736	1812	1773	1673	1683	1705	2307	2384	2377	2525	21,891
2014-15	1922	1743	1816	1759	1739	1660	1652	2427	2354	2375	2675	22,122
2015-16	1924	1747	1823	1762	1727	1725	1627	2354	2477	2344	2825	22,335
2016-17	1928	1750	1827	1769	1730	1716	1692	2310	2403	2467	2975	22,567
2017-18	1933	1753	1831	1773	1737	1718	1684	2390	2357	2394	3125	22,695
2018-19	1938	1758	1834	1777	1741	1725	1686	2379	2441	2345	3275	22,899

Note: ¹Includes special education enrollment at the elementary and JH/IS levels only.

Table A28
Community School District #22

Year	PK	K	1	2	3	4	5	6	7	8	SE¹	Total
HISTORICAL												
2008-09	2528	2503	2722	2657	2625	2553	2598	2154	2201	2301	2226	27,068
PROJECTED												
2009-10	2640	2456	2740	2641	2609	2632	2510	2191	2182	2178	2359	27,138
2010-11	2631	2459	2687	2661	2593	2617	2588	2118	2220	2161	2492	27,227
2011-12	2671	2456	2686	2608	2612	2603	2574	2179	2146	2199	2625	27,359
2012-13	2680	2493	2684	2605	2560	2624	2562	2170	2209	2126	2758	27,471
2013-14	2688	2501	2728	2603	2555	2572	2585	2154	2200	2190	2891	27,667
2014-15	2696	2509	2737	2646	2554	2565	2534	2168	2183	2181	3024	27,797
2015-16	2698	2516	2746	2655	2595	2563	2526	2122	2197	2165	3157	27,940
2016-17	2705	2520	2753	2664	2604	2604	2524	2110	2150	2181	3290	28,105
2017-18	2711	2525	2758	2670	2613	2613	2564	2107	2136	2134	3423	28,254
2018-19	2717	2530	2763	2675	2619	2623	2573	2146	2133	2119	3556	28,454

Note: ¹Includes special education enrollment at the elementary and JH/IS levels only.

Table A29
Community School District #23

Year	PK	K	1	2	3	4	5	6	7	8	SE¹	Total
HISTORICAL												
2008-09	742	802	963	932	923	879	899	1189	1137	1172	1122	10,760
PROJECTED												
2009-10	701	829	1007	878	850	818	845	1044	1177	1087	1182	10,418
2010-11	761	765	1041	918	800	753	787	982	1033	1125	1242	10,207
2011-12	712	827	961	950	836	709	724	912	972	987	1302	9,892
2012-13	714	774	1039	877	864	740	682	841	902	928	1362	9,723
2013-14	716	777	972	948	798	765	712	791	832	863	1422	9,596
2014-15	719	780	976	886	863	706	735	827	781	795	1482	9,550
2015-16	719	782	980	890	807	764	679	852	817	747	1542	9,579
2016-17	722	783	983	893	810	714	735	788	841	781	1602	9,652
2017-18	723	785	984	896	813	717	687	853	778	804	1662	9,702
2018-19	725	787	986	897	816	720	689	798	843	744	1722	9,727

Note: ¹Includes special education enrollment at the elementary and JH/IS levels only.

Table A30
Community School District #24

Year	PK	K	1	2	3	4	5	6	7	8	SE¹	Total
HISTORICAL												
2008-09	3127	4092	4136	3958	3835	3553	3450	3208	3483	3623	2827	39,292
PROJECTED												
2009-10	3141	4142	4249	4138	3833	3753	3499	3118	3512	3466	3135	39,986
2010-11	3177	4027	4304	4251	4009	3741	3696	3164	3408	3494	3443	40,714
2011-12	3264	4059	4181	4311	4120	3918	3678	3342	3461	3390	3751	41,475
2012-13	3266	4182	4217	4185	4178	4028	3859	3319	3655	3445	4059	42,393
2013-14	3267	4185	4342	4219	4056	4084	3969	3490	3603	3645	4367	43,227
2014-15	3269	4186	4346	4345	4089	3965	4026	3591	3821	3582	4675	43,895
2015-16	3285	4188	4347	4350	4211	3998	3907	3645	3937	3801	4983	44,652
2016-17	3306	4209	4349	4351	4216	4116	3940	3536	4003	3916	5291	45,233
2017-18	3326	4236	4370	4353	4217	4121	4056	3564	3878	3983	5599	45,703
2018-19	3346	4261	4398	4374	4218	4122	4061	3671	3909	3857	5907	46,124

Note: ¹Includes special education enrollment at the elementary and JH/IS levels only.

Table A31
Community School District #25

Year	PK	K	1	2	3	4	5	6	7	8	SE¹	Total
HISTORICAL												
2008-09	1998	2334	2305	2128	2167	2012	1952	2080	2103	2136	1669	22,884
PROJECTED												
2009-10	1957	2333	2450	2223	2098	2148	2016	2018	2093	2139	1803	23,278
2010-11	2071	2315	2451	2362	2193	2081	2155	2084	2030	2129	1937	23,808
2011-12	2302	2450	2434	2363	2330	2176	2091	2226	2097	2065	2071	24,605
2012-13	2303	2728	2574	2347	2333	2312	2187	2158	2240	2132	2205	25,519
2013-14	2305	2729	2864	2481	2317	2315	2324	2256	2170	2281	2339	26,381
2014-15	2306	2730	2865	2763	2450	2300	2328	2396	2269	2212	2473	27,092
2015-16	2318	2731	2866	2764	2730	2433	2313	2401	2409	2314	2607	27,886
2016-17	2333	2744	2867	2765	2731	2710	2448	2385	2414	2457	2741	28,595
2017-18	2345	2762	2882	2766	2732	2711	2731	2521	2397	2464	2875	29,186
2018-19	2361	2778	2901	2780	2733	2712	2732	2811	2534	2447	3009	29,798

Note: ¹Includes special education enrollment at the elementary and JH/IS levels only.

Table A32
Community School District #26

Year	PK	K	1	2	3	4	5	6	7	8	SE¹	Total
HISTORICAL												
2008-09	1191	1496	1430	1488	1615	1537	1592	1743	1841	1899	816	16,648
PROJECTED												
2009-10	1083	1402	1582	1455	1525	1649	1566	1705	1764	1892	889	16,512
2010-11	1075	1386	1489	1613	1492	1560	1682	1673	1727	1814	962	16,473
2011-12	1221	1381	1467	1521	1653	1527	1593	1798	1696	1776	1035	16,668
2012-13	1222	1570	1462	1494	1561	1691	1561	1714	1822	1746	1108	16,951
2013-14	1222	1571	1662	1493	1532	1601	1728	1678	1740	1875	1181	17,283
2014-15	1223	1571	1663	1695	1532	1568	1639	1859	1703	1793	1254	17,500
2015-16	1231	1572	1663	1696	1740	1570	1602	1774	1887	1757	1327	17,819
2016-17	1237	1581	1664	1696	1741	1783	1608	1724	1803	1944	1400	18,181
2017-18	1245	1590	1673	1697	1741	1784	1827	1734	1751	1859	1473	18,374
2018-19	1253	1600	1683	1705	1742	1784	1828	1970	1761	1806	1546	18,678

Note: ¹Includes special education enrollment at the elementary and JH/IS levels only.

Table A33
Community School District #27

Year	PK	K	1	2	3	4	5	6	7	8	SE¹	Total
HISTORICAL												
2008-09	2374	3200	3471	3367	3279	3203	3212	3139	3411	3457	2625	34,738
PROJECTED												
2009-10	2318	3131	3481	3416	3330	3224	3198	3224	3353	3333	2781	34,789
2010-11	2416	3147	3420	3431	3378	3275	3217	3210	3456	3279	2937	35,166
2011-12	2433	3227	3444	3359	3394	3322	3268	3227	3439	3382	3093	35,588
2012-13	2434	3279	3519	3378	3316	3341	3314	3280	3453	3369	3249	35,932
2013-14	2435	3281	3582	3460	3332	3256	3338	3323	3516	3379	3405	36,307
2014-15	2435	3281	3585	3517	3418	3272	3246	3351	3552	3445	3561	36,663
2015-16	2448	3281	3585	3520	3471	3361	3263	3252	3590	3479	3717	36,967
2016-17	2463	3299	3585	3520	3474	3410	3354	3266	3467	3520	3873	37,231
2017-18	2478	3319	3605	3520	3474	3413	3401	3360	3473	3388	4029	37,460
2018-19	2494	3340	3626	3540	3474	3413	3404	3407	3585	3393	4185	37,861

Note: ¹Includes special education enrollment at the elementary and JH/IS levels only.

Table A34
Community School District #28

Year	PK	K	1	2	3	4	5	6	7	8	SE¹	Total
HISTORICAL												
2008-09	1990	2298	2394	2307	2359	2136	2191	2081	1874	2095	1876	23,601
PROJECTED												
2009-10	1986	2160	2503	2295	2234	2301	2069	2089	1900	1881	2065	23,483
2010-11	2002	2220	2360	2396	2222	2178	2231	1970	1909	1907	2254	23,649
2011-12	2079	2224	2425	2260	2321	2164	2113	2128	1799	1917	2443	23,873
2012-13	2079	2315	2423	2322	2187	2265	2096	2017	1935	1810	2632	24,081
2013-14	2080	2315	2523	2319	2248	2132	2198	2002	1831	1948	2821	24,417
2014-15	2080	2315	2523	2415	2245	2191	2065	2099	1823	1843	3010	24,609
2015-16	2091	2315	2523	2415	2339	2190	2121	1969	1902	1835	3199	24,899
2016-17	2105	2329	2523	2415	2339	2279	2121	2023	1794	1916	3388	25,232
2017-18	2118	2343	2538	2415	2339	2279	2207	2024	1845	1808	3577	25,493
2018-19	2130	2358	2554	2430	2339	2279	2207	2106	1839	1858	3766	25,866

Note: ¹Includes special education enrollment at the elementary and JH/IS levels only.

Table A35
Community School District #29

Year	PK	K	1	2	3	4	5	6	7	8	SE¹	Total
HISTORICAL												
2008-09	1786	2063	2497	2415	2412	2372	2403	2327	2396	2398	1796	24,865
PROJECTED												
2009-10	1628	2053	2448	2444	2421	2364	2394	2273	2348	2397	2042	24,812
2010-11	1650	1997	2440	2400	2453	2373	2385	2250	2293	2348	2288	24,877
2011-12	1655	2035	2378	2391	2410	2404	2390	2241	2268	2293	2534	24,999
2012-13	1655	2038	2420	2324	2400	2363	2427	2235	2258	2271	2780	25,171
2013-14	1656	2039	2426	2369	2330	2352	2387	2272	2250	2260	3026	25,367
2014-15	1658	2039	2427	2376	2377	2282	2377	2212	2290	2254	3272	25,564
2015-16	1666	2042	2427	2377	2385	2330	2301	2212	2231	2293	3518	25,782
2016-17	1676	2051	2431	2377	2386	2337	2353	2154	2230	2239	3764	25,998
2017-18	1687	2064	2442	2381	2386	2338	2362	2193	2173	2237	4010	26,273
2018-19	1697	2076	2456	2392	2390	2338	2363	2205	2211	2177	4256	26,561

Note: ¹Includes special education enrollment at the elementary and JH/IS levels only.

Table A36
Community School District #30

Year	PK	K	1	2	3	4	5	6	7	8	SE¹	Total
HISTORICAL												
2008-09	2519	2808	2937	2824	2714	2620	2714	2851	2653	2752	2292	29,684
PROJECTED												
2009-10	2467	2777	3013	2805	2704	2652	2619	2885	2601	2631	2446	29,600
2010-11	2502	2720	2983	2879	2693	2645	2654	2783	2635	2579	2600	29,673
2011-12	2522	2762	2920	2848	2765	2638	2636	2817	2538	2612	2754	29,812
2012-13	2522	2773	2965	2788	2732	2709	2627	2807	2576	2516	2908	29,923
2013-14	2523	2774	2972	2831	2675	2676	2696	2795	2582	2554	3062	30,140
2014-15	2525	2774	2973	2837	2716	2619	2665	2867	2553	2560	3216	30,305
2015-16	2537	2775	2973	2838	2721	2660	2608	2835	2613	2535	3370	30,465
2016-17	2553	2791	2974	2838	2722	2664	2650	2775	2586	2597	3524	30,674
2017-18	2569	2807	2990	2839	2722	2665	2654	2819	2534	2568	3678	30,845
2018-19	2585	2824	3009	2854	2723	2665	2655	2822	2578	2517	3832	31,064

Note: ¹Includes special education enrollment at the elementary and JH/IS levels only.

Table A37
Community School District #31

Year	PK	K	1	2	3	4	5	6	7	8	SE¹	Total
HISTORICAL												
2008-09	3342	4213	4201	3976	3914	3862	3793	3690	3850	3869	4110	42,820
PROJECTED												
2009-10	3196	4118	4359	4158	3920	3832	3877	3621	3752	3832	4511	43,176
2010-11	3329	3951	4269	4313	4100	3835	3849	3700	3687	3736	4912	43,681
2011-12	3346	4127	4098	4226	4250	4014	3855	3675	3765	3671	5313	44,340
2012-13	3371	4154	4281	4057	4170	4159	4035	3685	3743	3749	5714	45,118
2013-14	3394	4184	4313	4239	4004	4082	4179	3856	3757	3730	6115	45,853
2014-15	3416	4212	4343	4271	4185	3918	4107	3993	3933	3743	6516	46,637
2015-16	3445	4241	4372	4301	4217	4098	3944	3929	4068	3922	6917	47,454
2016-17	3476	4276	4402	4330	4247	4128	4128	3776	4011	4055	7318	48,147
2017-18	3509	4315	4438	4359	4275	4157	4158	3954	3857	4000	7719	48,741
2018-19	3541	4355	4479	4395	4304	4184	4187	3982	4042	3847	8120	49,436

Note: ¹Includes special education enrollment at the elementary and JH/IS levels only.

Table A38
Community School District #32

Year	PK	K	1	2	3	4	5	6	7	8	SE¹	Total
HISTORICAL												
2008-09	1085	1071	1317	1278	1141	1202	1236	1440	1424	1395	1095	13,684
PROJECTED												
2009-10	1028	1087	1278	1220	1147	1063	1221	1284	1417	1349	1157	13,251
2010-11	1050	1067	1304	1184	1092	1070	1072	1273	1262	1342	1219	12,935
2011-12	1058	1089	1278	1207	1058	1018	1083	1104	1251	1196	1281	12,623
2012-13	1061	1100	1306	1184	1080	985	1025	1122	1087	1186	1343	12,479
2013-14	1064	1103	1317	1208	1059	1006	982	1054	1104	1030	1405	12,332
2014-15	1067	1107	1320	1221	1080	987	1013	987	1038	1048	1467	12,335
2015-16	1069	1110	1326	1223	1094	1006	992	1040	975	984	1529	12,348
2016-17	1072	1111	1329	1229	1096	1019	1015	1012	1024	924	1591	12,422
2017-18	1073	1114	1330	1232	1101	1021	1025	1044	998	971	1653	12,562
2018-19	1076	1117	1333	1233	1104	1026	1027	1049	1028	946	1715	12,654

Note: ¹Includes special education enrollment at the elementary and JH/IS levels only.

Table A39
Community School District #75

Year	PK	K	1	2	3	4	5	6	7	8	9	10	11	12	SE	Total
HISTORICAL																
2008-09	0	11	26	37	40	34	30	46	70	69	95	150	137	168	21195	22,108
PROJECTED																
2009-10	0	10	23	34	37	43	31	39	58	72	85	131	123	164	21001	21,851
2010-11	0	10	23	29	30	41	37	40	52	63	92	117	108	138	21119	21,899
2011-12	0	10	23	28	29	34	35	49	54	59	74	133	98	126	21148	21,900
2012-13	0	10	23	28	28	30	34	47	61	58	72	111	109	111	21204	21,926
2013-14	0	10	23	28	28	29	28	42	58	67	71	99	95	129	21262	21,969
2014-15	0	10	23	28	28	29	25	38	54	63	84	107	85	112	21339	22,025
2015-16	0	10	23	28	28	29	25	36	52	59	78	121	90	101	21431	22,111
2016-17	0	10	23	28	28	29	25	36	51	56	70	115	102	107	21537	22,217
2017-18	0	10	23	28	28	29	25	36	51	54	68	106	93	125	21655	22,331
2018-19	0	10	23	28	28	29	25	36	51	54	67	99	88	115	21778	22,431

**PROJECTED GRADE 9-12 ENROLLMENTS
FOR 2009-10 TO 2018-19
BY BOROUGH**

Table A40
Manhattan High School Totals

Year	9	10	11	12	GED	SE¹	Total
HISTORICAL							
2008-09	18366	16631	13281	11423	2202	3554	65,457
PROJECTED							
2009-10	17153	16216	12583	12278	2151	3,767	64,148
2010-11	16093	15205	12291	11639	2151	3,980	61,359
2011-12	15518	14335	11575	11372	2151	4,193	59,144
2012-13	14801	13847	10972	10718	2151	4,406	56,895
2013-14	14210	13255	10637	10172	2151	4,619	55,044
2014-15	14250	12768	10220	9870	2151	4,832	54,091
2015-16	13594	12851	9893	9487	2151	5,045	53,021
2016-17	13213	12261	10001	9192	2151	5,258	52,076
2017-18	13264	11993	9570	9302	2151	5,471	51,751
2018-19	13433	12099	9420	8905	2151	5,684	51,692

Note: ¹Includes special education enrollment at the high school level only.

Table A41
Bronx High School Totals

Year	9	10	11	12	GED	SE¹	Total
HISTORICAL							
2008-09	17323	15851	10932	9566	2572	5684	61,928
PROJECTED							
2009-10	17367	14587	11050	9604	2357	5732	60,697
2010-11	16329	14622	10186	9713	2357	5780	58,987
2011-12	16301	13760	10213	8962	2357	5829	57,422
2012-13	15772	13719	9627	8987	2357	5878	56,340
2013-14	15442	13280	9574	8479	2357	5928	55,060
2014-15	15454	12999	9278	8421	2357	5978	54,487
2015-16	15140	13031	9078	8164	2357	6028	53,798
2016-17	14720	12756	9135	7987	2357	6079	53,034
2017-18	14764	12409	8932	8053	2357	6130	52,645
2018-19	14728	12451	8696	7870	2357	6182	52,284

Note: ¹Includes special education enrollment at the high school level only.

Table A42
Brooklyn High School Totals

Year	9	10	11	12	GED	SE¹	Total
HISTORICAL							
2008-09	25247	24953	15802	15740	2371	6520	90,633
PROJECTED							
2009-10	25310	23421	15312	15976	2181	6682	88,882
2010-11	23708	23490	14415	15474	2181	6849	86,117
2011-12	23287	22075	14458	14567	2181	7020	83,588
2012-13	22442	21699	13623	14608	2181	7195	81,748
2013-14	22034	20911	13401	13758	2181	7374	79,659
2014-15	21465	20575	12911	13534	2181	7558	78,224
2015-16	21169	20095	12719	13038	2181	7746	76,948
2016-17	20792	19836	12446	12839	2181	7939	76,033
2017-18	20945	19504	12292	12558	2181	8137	75,617
2018-19	21119	19694	12089	12400	2181	8340	75,823

Note: ¹Includes special education enrollment at the high school level only.

Table A43
Queens High School Totals

Year	9	10	11	12	GED	SE¹	Total
HISTORICAL							
2008-09	21871	20181	15882	13687	1486	4577	77,684
PROJECTED							
2009-10	22236	19256	15456	14318	1432	4748	77,446
2010-11	21436	19598	14787	13934	1432	4919	76,106
2011-12	21248	18923	15065	13335	1432	5090	75,093
2012-13	21095	18751	14572	13588	1432	5261	74,699
2013-14	20816	18617	14426	13146	1432	5432	73,869
2014-15	21299	18412	14330	13013	1432	5603	74,089
2015-16	21289	18951	14208	12927	1432	5774	74,581
2016-17	21716	18824	14754	12824	1432	5945	75,495
2017-18	22292	19217	14500	13332	1432	6116	76,889
2018-19	22069	19792	14816	13090	1432	6287	77,486

Note: ¹Includes special education enrollment at the high school level only.

Table A44
Staten Island High School Totals

Year	9	10	11	12	GED	SE¹	Total
HISTORICAL							
2008-09	4599	4323	3748	3262	403	1,330	17,665
PROJECTED							
2009-10	4525	4404	3571	3322	356	1,298	17,476
2010-11	4513	4323	3640	3162	356	1,267	17,261
2011-12	4411	4305	3555	3225	356	1,236	17,088
2012-13	4381	4210	3529	3144	356	1,206	16,826
2013-14	4469	4170	3454	3117	356	1,177	16,743
2014-15	4449	4253	3402	3054	356	1,149	16,663
2015-16	4511	4237	3468	3001	356	1,121	16,694
2016-17	4698	4284	3464	3058	356	1,094	16,954
2017-18	4858	4474	3481	3058	356	1,068	17,295
2018-19	4841	4617	3656	3066	356	1,042	17,578

Note: ¹Includes special education enrollment at the high school level only.

Methodology

Introduction

For the fourth consecutive year, Statistical Forecasting LLC was retained by the New York City School Construction Authority to perform enrollment projections for the New York City Public Schools for the ten-year period beginning with the 2009-10 school year and ending in 2018-19. Enrollment projections were performed at the community school district level for grades PK-8 and the borough level for the high school grades (9-12). All projections were computed by the four major ethnicities in the New York City Public Schools: Asian/American Indian, Non-Hispanic Black (subsequently referred to as Black), Hispanic, and Non-Hispanic White (subsequently referred to as White). Although American Indians are a very small percentage of the student population, they were grouped with Asians to be consistent with methodology used in previous years. Projections at the borough level were computed by aggregating the PK-8 projections from each of the 32 community school districts and then including both the high school projections and enrollment projections from District 75, the special education district. Borough-level projections were then aggregated again to derive the overall projections for the New York City Public Schools.

Historical Enrollment

To perform the projections, historical enrollment data were downloaded from the New York City Department of Education web portal for a six-year period beginning with the 2003-04 school year and ending with the 2008-09 school year. Enrollment data were collected for each of the thirty-two community school districts by race (Asian/American Indian, Black, Hispanic, and White) and for District 75, the city's special education district. Historical enrollment of District 79, the city's alternative high school district, was returned to their corresponding local community school districts before the projections were performed. District 79 students housed in off-site facilities not maintained by the New York City School Construction Authority were not included in this analysis. By not counting all D79 students, our historical enrollment totals are slightly different (lower) than those shown on the web portal. In addition, in 2003-04, several districts were dissolved such as Districts 33, 71, 85, etc. Schools in these districts were returned to their local community school districts so that the enrollment trends could be analyzed.

Birth Data

Birth data were needed to calculate survival ratios for each birth-to-pre-kindergarten or birth-to-kindergarten cohort. The New York City Department of Health and Mental Hygiene (DHMH) provided historical birth data for 1998-2007. Birth data for 2008 were not available. The birth data were geocoded by DHMH, i.e., assigned geographic coordinates to a birth mother based on her residence so that birth counts by race could be tabulated for each of the 32 community school districts. Birth residences of some mothers were unknown. Race

was determined by the mother's ethnicity and was categorized as Hispanic, Asian and Pacific Islander, White Non-Hispanic, Black Non-Hispanic, or Other/Unknown Ethnicity.

For the purpose of this analysis, babies whose race and borough of residence were known, but not the community school district, were reassigned into a local community school district based on a proportional basis. For instance, in 1998, District 1 had 7.2% of Hispanic babies in Manhattan; therefore 7.2% of the Hispanic babies in the borough with an unknown community school district were assigned into District 1. This process was repeated for all four major races for each of the five boroughs for each historical birth year. In addition, babies whose community school district was known but whose ethnicity was not, were reassigned into a specific race within the community school district based on the existing racial proportions.

Future birth rates for the years 2008-2014 were needed to project pre-kindergarten and kindergarten cohorts through the 2018-19 school year. To accomplish this task, the New York City Department of Planning¹ provided population projections of females of childbearing ages (15-49) by borough in five-year intervals from 2000-2030. The projections of the number of females were age-specific, but not race-specific, for five-year intervals (15-19, 20-24, etc.). Using birth counts from the DHMH for 1999-2001 for each age-specific group and the 2000 population of each age group (group quarters excluded), age-specific fertility rates were computed by averaging the number of births over the three-year period and dividing by the age-specific population from 2000. This process was repeated for all five-boroughs. In projecting future births, it was assumed that the age-specific fertility rates would remain constant. Using the age-specific fertility rates and estimated female populations in 2007, the number of births for each age-specific group in each borough was computed. Since the actual number of births from 2007 was known from the DHMH, the actual and projected number of births was compared to check the accuracy of the model. A constant (the difference between the actual and projected births by borough for each age-specific group in 2007) was computed and used to adjust the number of births in future years. For the years between 2007 and 2010 or between 2010 and 2015, female age-specific populations were estimated by dividing the projected increase or decrease in population by five and adding that value to the baseline year (either 2005 or 2010). Estimated birth counts were then computed by using the age-specific fertility rates and adding a constant as discussed previously.

The age-specific fertility rates and projected birth counts did not include ethnicity, as this data were unavailable from the Department of Planning. While estimated birth counts were computed for each year for each borough, the birth data would need to be assigned to the community school districts according to ethnicity. To accomplish this, actual birth data from 2007 by race and community school district were used to develop a proportion matrix. The proportions were then multiplied by the projected number of births generated from 2008-2014 to project births by race and community school district.

¹New York City Population Projections by Age/Sex & Borough, 2000-2030, New York City Department of City Planning. (2006).

Enrollment Projection Methods

The Cohort-Survival Ratio method (CSR) and the Grade Progression Differences method (GPD) were used to project enrollments for grades PK-12. The CSR method is the most commonly employed technique to project school enrollments. In this method, a survival ratio is computed for each grade progression, which essentially compares the number of students in a particular grade to the number of students in the previous grade during the previous year. The survival ratio indicates whether the enrollment is stable, increasing, or decreasing. A survival ratio of 1.00 indicates stable enrollment, less than 1.00 indicates declining enrollment, while greater than 1.00 indicates increasing enrollment. If, for example, a school district had 100 4th graders and the next year had 95 5th graders, the survival ratio would be 0.95.

Survival ratios were calculated using historical data from the past six years for birth to pre-kindergarten, birth to kindergarten, kindergarten to first grade, first grade to second grade, etc. Due to the fluctuation in survival ratios from year to year, it is appropriate to calculate an average survival ratio, which is then used to calculate enrollments ten years into the future. In this study, an average of the last two survival ratios was typically used to capture the most recent trends. However, the enrollment patterns in each of the community school districts were studied individually and the average survival ratios used varied on the trends that were present.

For the high school grades, the most recent ratio was used if the value was higher than the previous year's survival ratio. Since there are efforts to retain more high school students throughout the city, it is expected that the higher survival ratios are more consistent with what may occur in the future. If the most recent ratio was lower than the previous year's ratio, an average of the last two ratios was computed and used to project future enrollment.

Due to the very small grade sizes in some of the community school districts (there are not many individuals of a particular race in some districts), the GPD method was used. In the CSR method, small grade cohorts can lead to greater fluctuation of the survival ratios with the entering or exiting of just a few students. To prevent this, the GPD method was used typically when cohort sizes were less than 30-35 students, although professional judgment was used on a case-by case basis. In the GPD method, the change in the number of students, as opposed to the ratio, is computed for each grade progression from one year to the next. A positive value indicates an inward migration of students while a negative value indicates an outward migration of students. Differences are computed for a number of years and averaged to project grade-by-grade enrollments for ten years into the future.

The main assumption for both of these enrollment projection methods is that past trends will continue to occur in the future. If future trends in the local community school districts are different than that which occurred historically, the accuracy of the enrollment projection methods will be limited.

Enrollment Projections

PK-8 projections were performed for each of the four major ethnic races (Asian/American Indian, Black, Hispanic, and White) for each of the 32 community school districts. A total of 128 PK-8 projections were performed for these districts. For grades 9-12, which corresponds to the high school grades, enrollment was projected only at the borough level. Since New York City Public School students have school choice in the high school they would like to attend, many students choose to attend high school outside of their local community school district. Therefore, the high school projections were computed at the borough level. Grade 9-12 projections were computed by race by using the aggregated 8th grade enrollments from the corresponding community school districts within each of the five boroughs and applying the CSR method. A total of 20 projections were performed for the high school grades. Enrollment projections were also performed for District 75, the city's special education district, and will be discussed separately. Projections at the borough level were computed by aggregating the PK-8 projections from each of the 32 community school districts and then including both the high school projections and enrollment projections from District 75. Borough-level projections were aggregated again to derive the overall projections for the New York City Public Schools.

Regarding the projection of GED students, they were projected by borough, not community school district, to be consistent with the methodology used to project high school students as outlined above. If there was a large change in the number of GED students in the last historical school year (2008-09), the last reported enrollment was used for the entire projection period. However, if the number of GED students was fairly consistent over the historical time period, an average was computed based on the perceived trend and this value was used for the entire projection period.

The number of special education students in each of the community school districts (PK-8) and at the borough level (9-12) was also computed separately. First, the numerical and percentage changes in special education enrollment for each of the community school districts (PK-8) or boroughs (9-12) were computed for the last six years based on historical counts. Average numerical and percentage changes were computed and, depending upon the magnitude of historical growth/loss and consistency of historical trends, the average numerical or percentage change was used to compute future special education enrollment from 2009-10 through 2018-19.

District 75

In developing a methodology to project enrollment in District 75, projecting enrollment at the program level (Integrated and Other Special Education Services) was initially considered. However, since the Other Special Education Services classification consists of most of the District 75 students and there are few students in the Integrated category, we believe that there would be too much variability and hence error, in projecting the special education students in the Integrated category. In addition, consideration was given to breaking down the Other Special Education Services into its sub-categories. However,

since there are 31 sub-categories with few students in some of the sub-categories, accurately projecting each of the sub-categories would be difficult given their variability.

Instead, District 75 projections were computed by analyzing the trends of total special education enrollment by race at the borough level. Enrollment projections were computed by the four major ethnicities in District 75 to be consistent with the methodology used in performing enrollment projections for the general education student population.

For each ethnicity and borough, the percentage change and numerical change of the total number of special education students were computed for each year from 2003-04 through 2008-09. Average numerical and percentage changes were computed and, depending upon the size of the ethnic group and the historic trends, the average numerical change or percentage change was used to compute future special education enrollment from 2009-10 through 2018-19. Simply stated, the District 75 enrollment projections are based on historical trends. Enrollment in a district such as this can be highly influenced by policy changes. For instance, if the district wished to limit the number of students in District 75 thereby increasing enrollment at the regional special education level, the accuracy of the projections would be affected by such a policy change.

Traditional enrollment projection methods such as the CSR and GPD methods were used to project the small number of general education students in District 75. Projections were also computed by the four major ethnicities in the school district. Since the historical grade-level counts were often very small, the GPD method was often used to project enrollment. In other instances when grade sizes were larger (approximately 30 students and up), the CSR method was used. Typically, the historical lower grade levels were very small (e.g., PK-6) but grew in size in the upper grades. In these instances, the GPD method would be used for the lower grades and the CSR method would be used for the upper grades.

After total grade-level enrollments by race were computed, the grade-by-grade totals were broken down by borough using the proportion of students within each borough with respect to city totals for the 2008-09 school year. It was assumed that those proportions would remain constant throughout the ten-year projection period. The proportions were then multiplied by the computed projections for each grade to allocate enrollment by borough. This process was completed for each of the four races.